



VERPLAATSING:
MELKVEE- & PAARDENHOUDERIJ
Cortenoeverseweg 121-123 Brummen

ondergrond: minuutplan 1811



**VERPLAATSING
MELKVEE- & PAARDENHOUDERIJ**
Cortenoeverseweg 121-123 Brummen

opdrachtgever:
Fam. Breukink
Cortenoeverseweg 121-123
6971 JL Brummen

0575 561 418

ROMBOU B.V. ism

Bureau Poortvliet&Partners
tuin- en landschapsarchitecten bnt

Bekhuis&Kleinjan architecten

Orio architecten

Beekbergen: 23 april 2015 (def)

S

The logo for rombou, featuring the word in a lowercase, sans-serif font with a horizontal line under the 'o'.

ROMBOU B.V.

**Zwartewaterallee 14
Postbus 240
8000 AE Zwolle**

**088 888 6661
www.rombou.nl**



**Bureau Poortvliet&Partners
tuin- en landschapsarchitecten bnt**

**Postbus 16
7360 AA Beekbergen**

**055 506 2981
www.poortvlietenpartners.nl**

The logo for Bekhuis & Kleinjan Architecten, featuring the company name in a serif font with 'ARCHITECTEN' in a smaller, sans-serif font below.

Bekhuis&Kleinjan architecten

**Rijssensestraat 10
7642 CX Wierden**

**0546 571 004
www.bekhuis-kleinjan.nl**

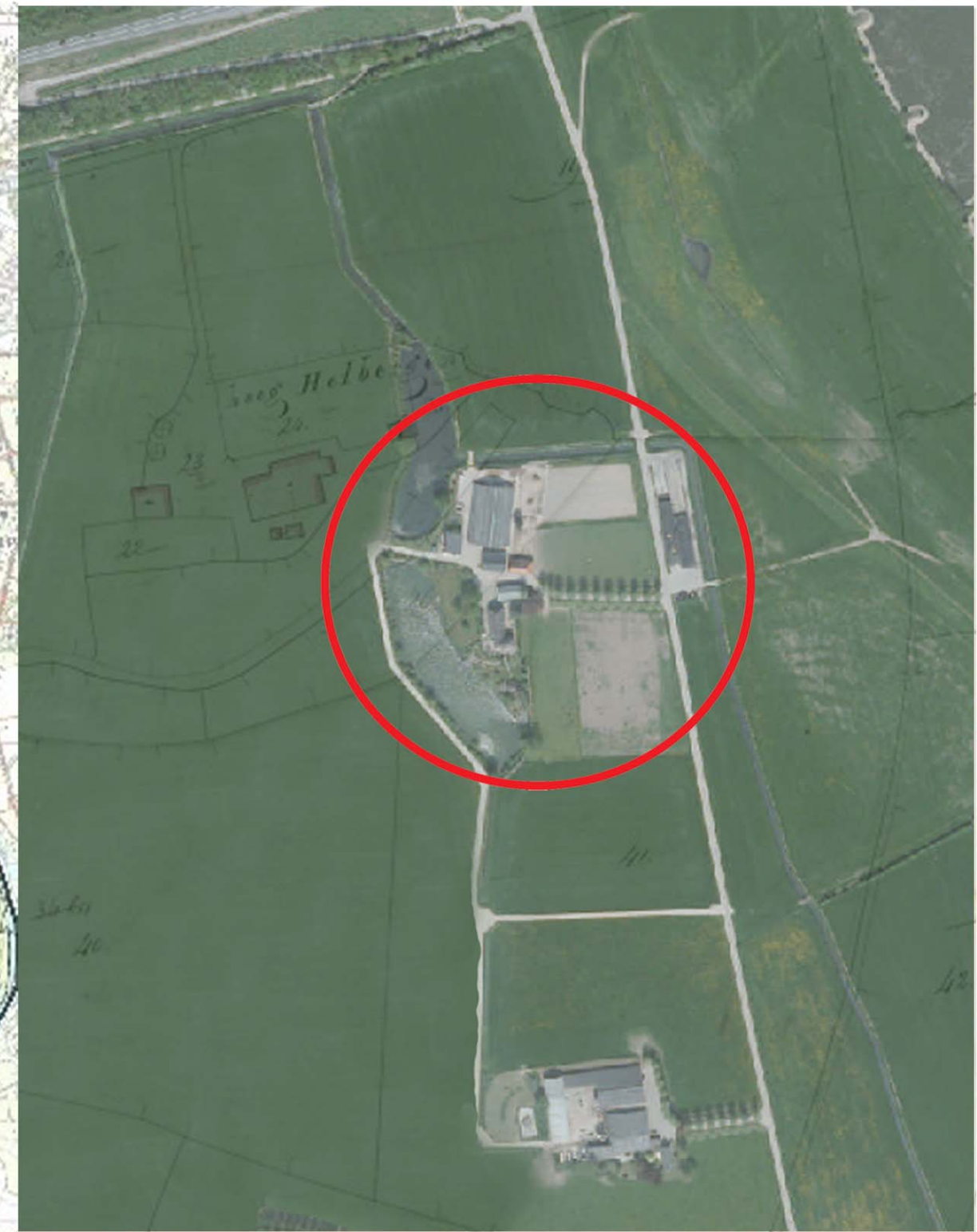
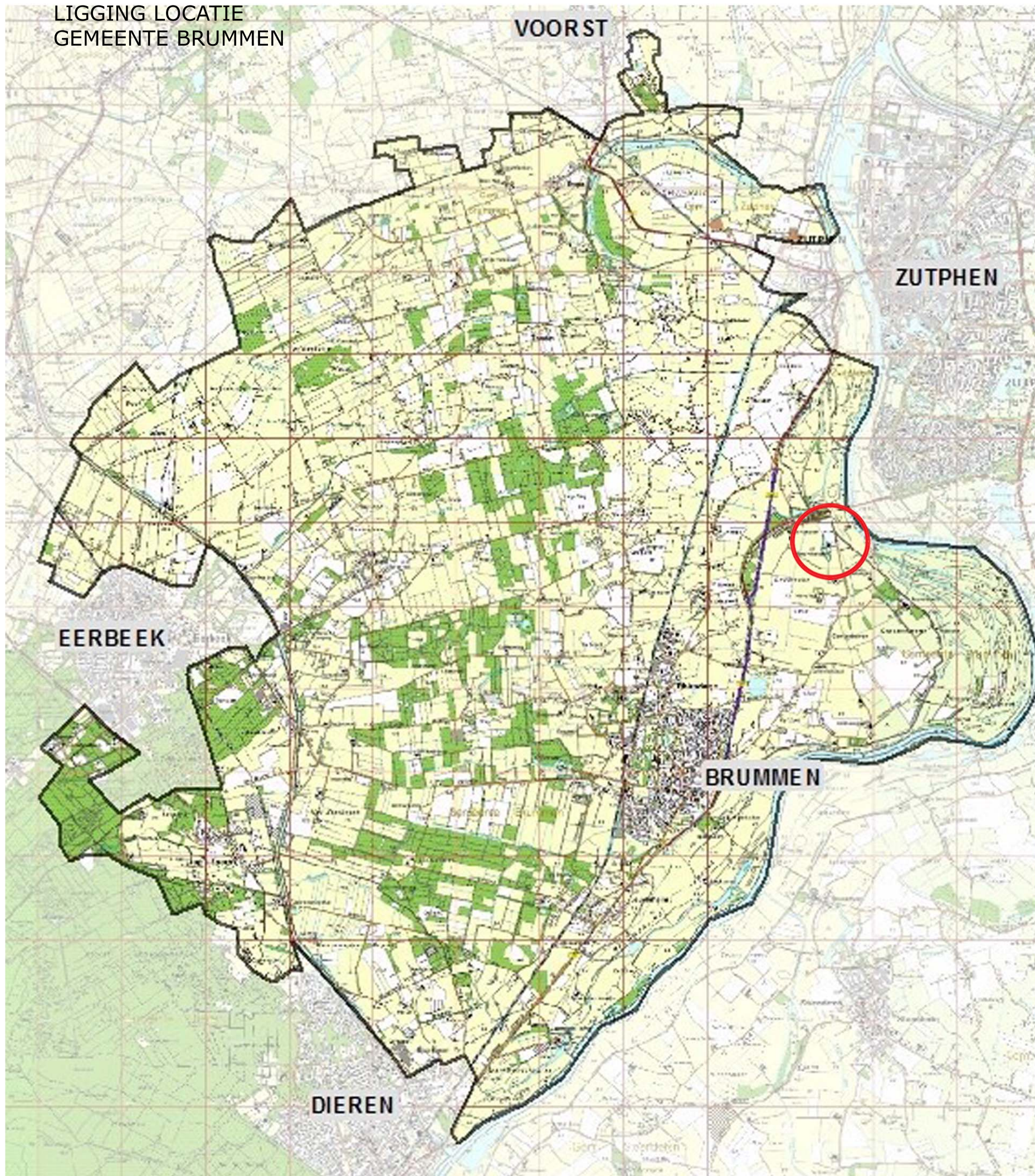


Orio architecten

**Reactorweg 301
3542 AD Utrecht**

**085 877 0541
www.orioarchitecten.nl**

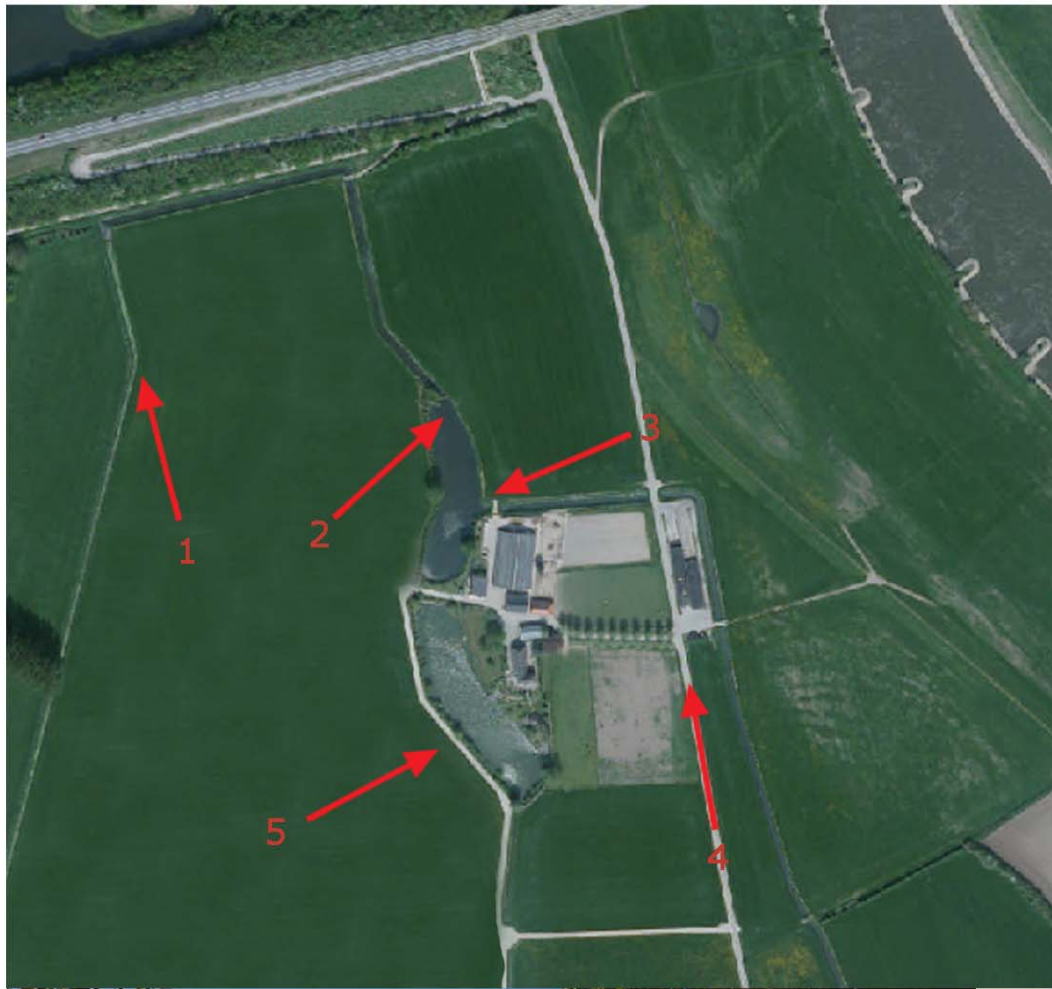
LIGGING LOCATIE
GEMEENTE BRUMMEN



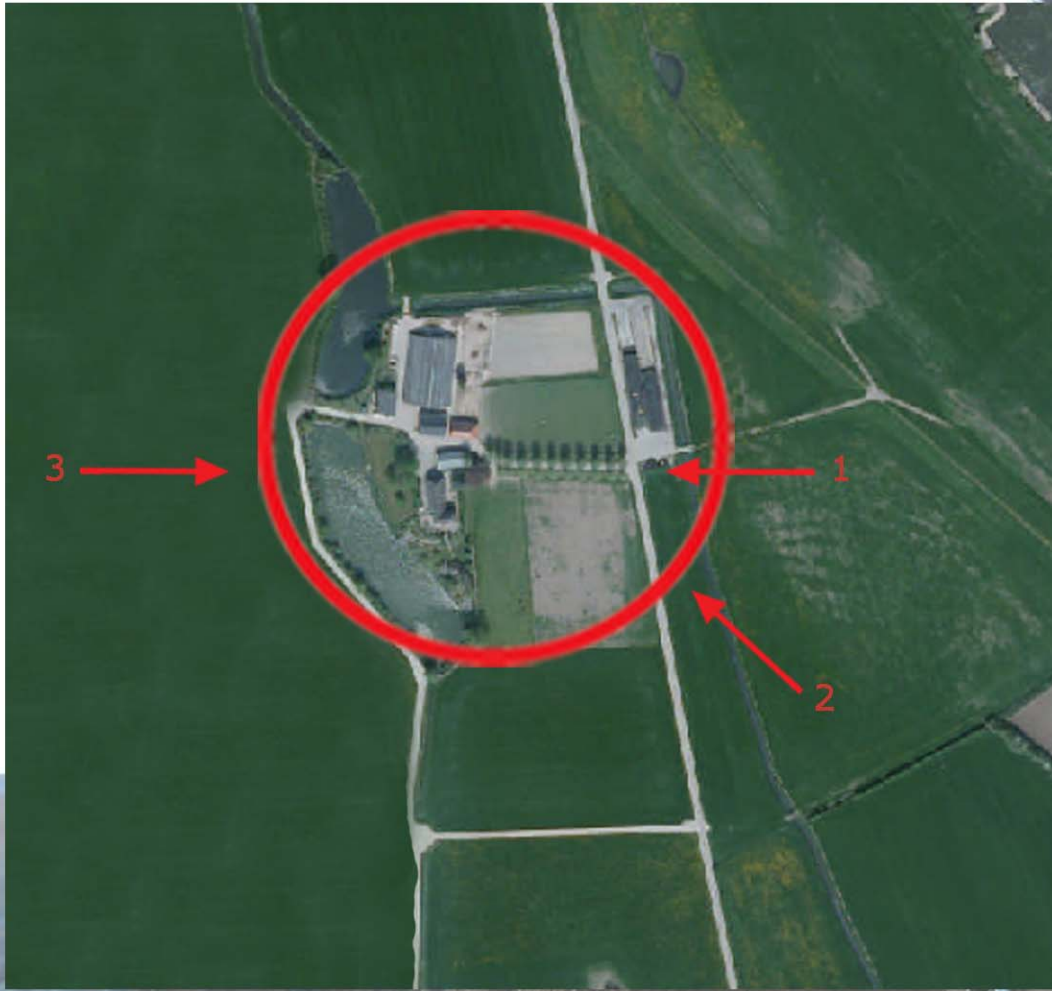
CORTENOEVERSEWEG 121-123
GEMEENTE BRUMMEN



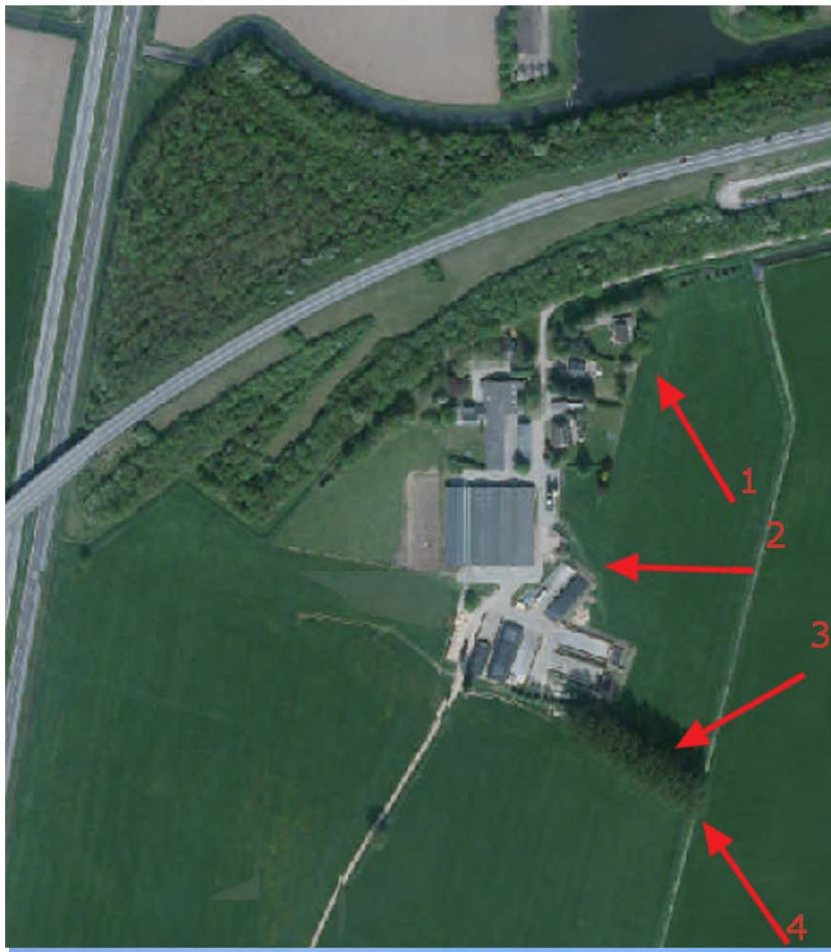
CONTEXT PROJECTGEBIED



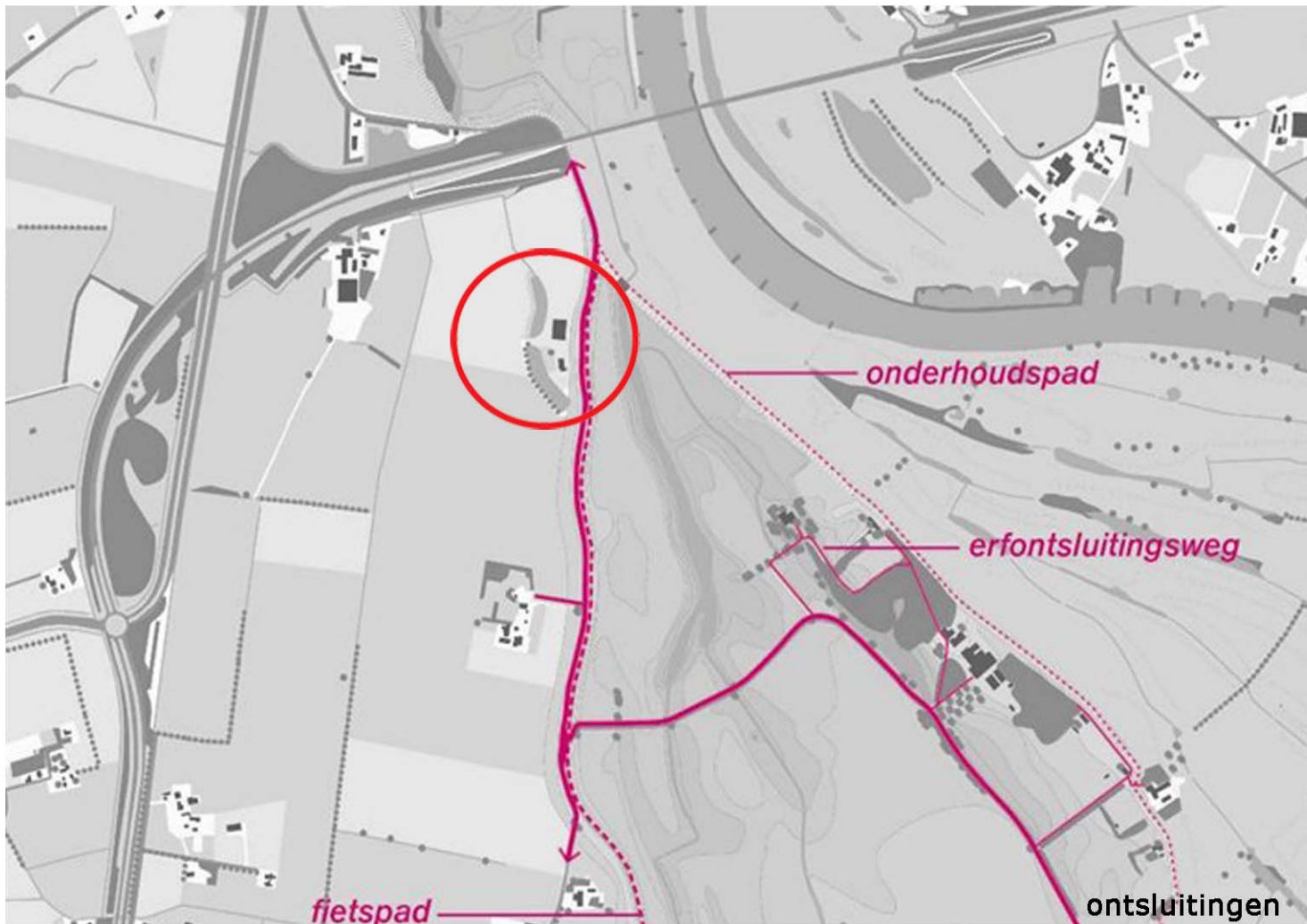
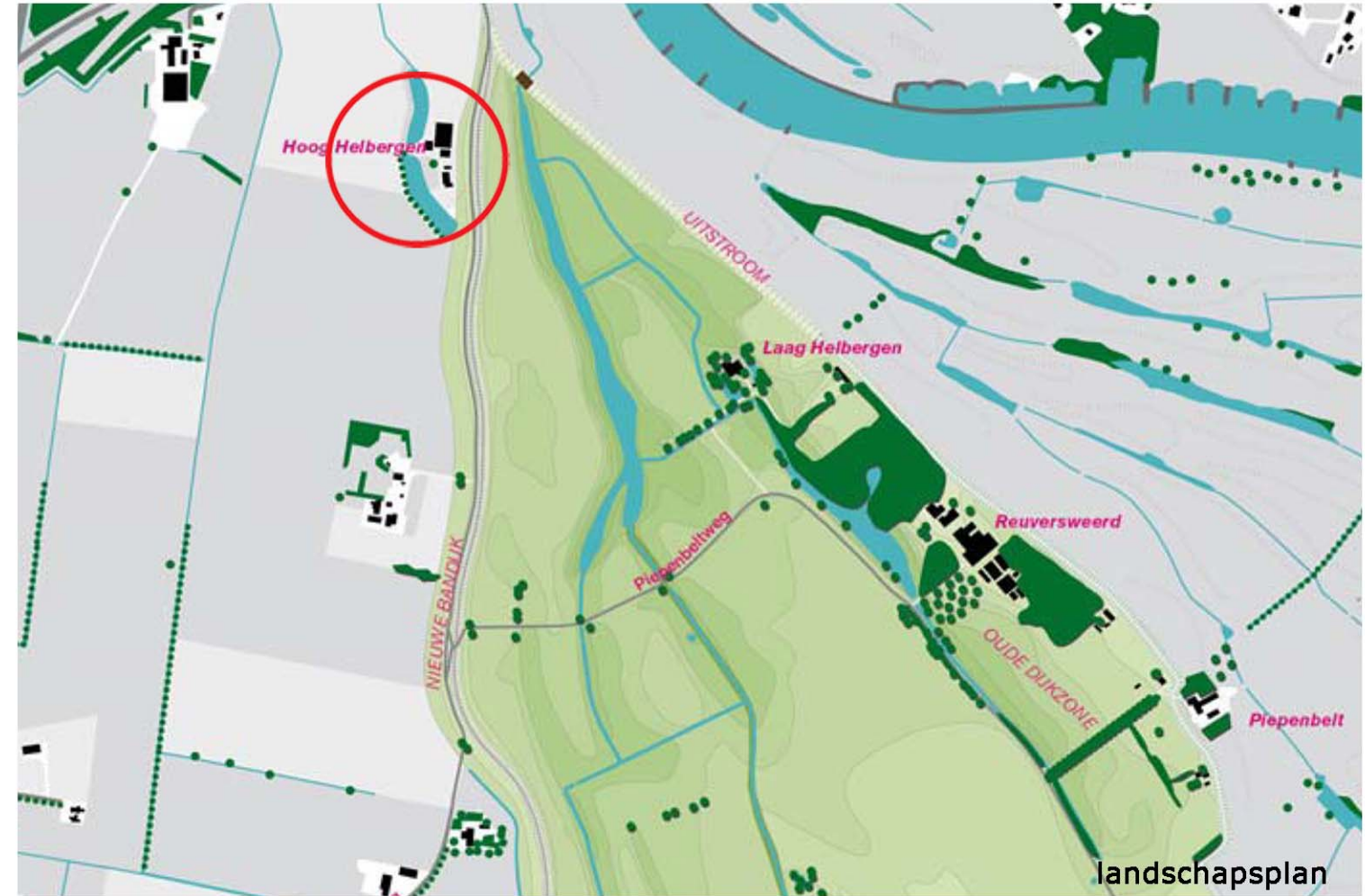




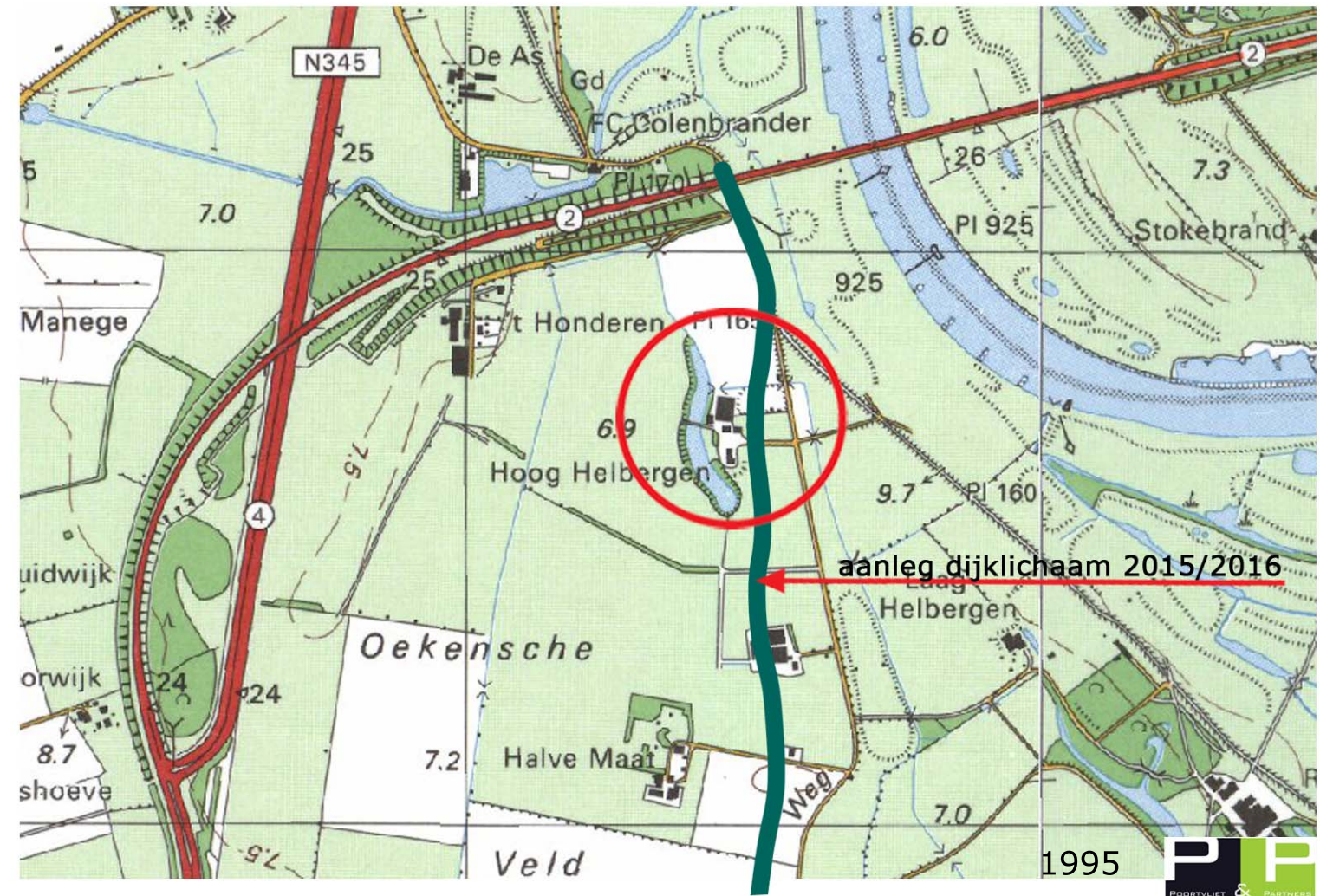
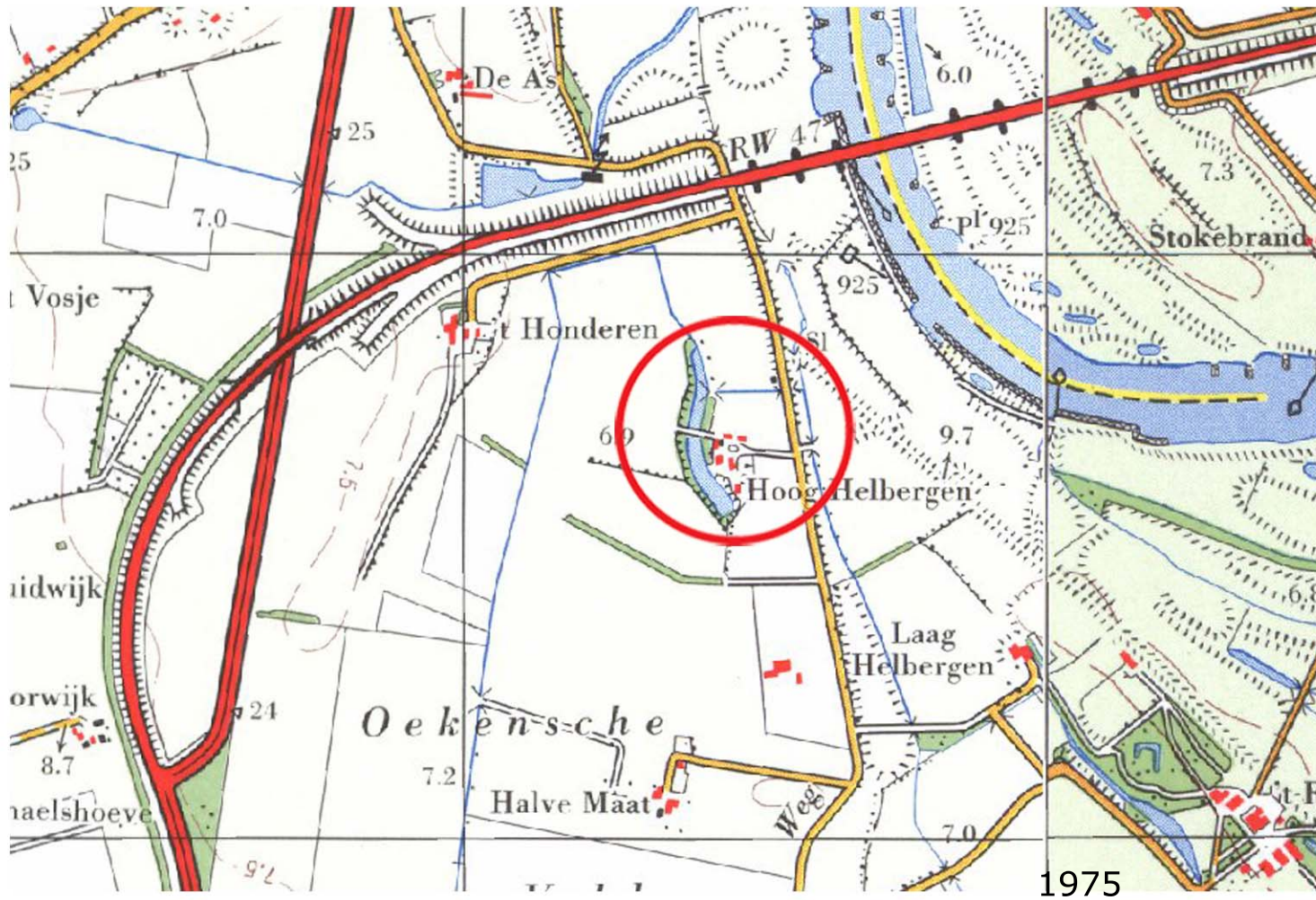
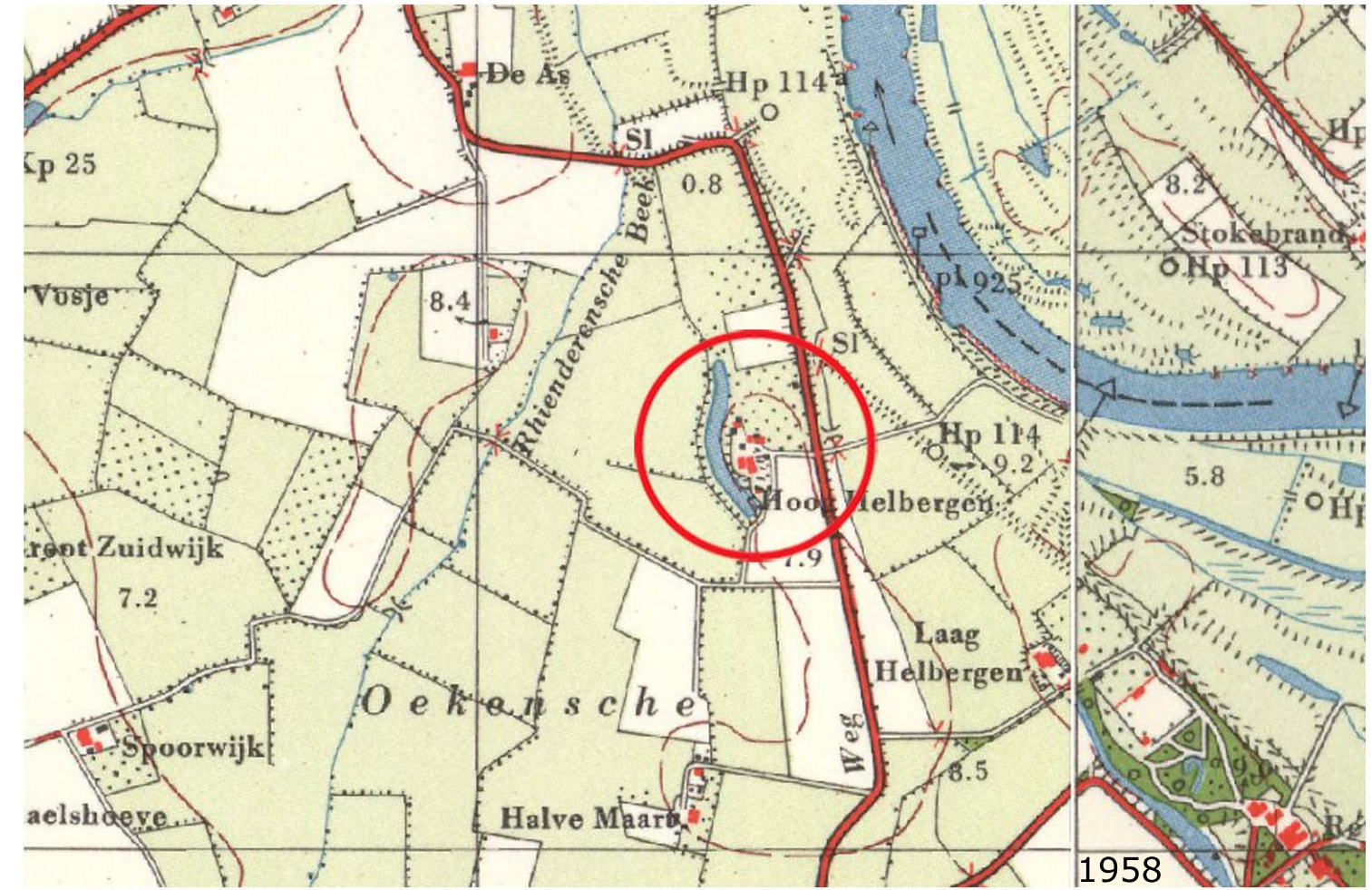
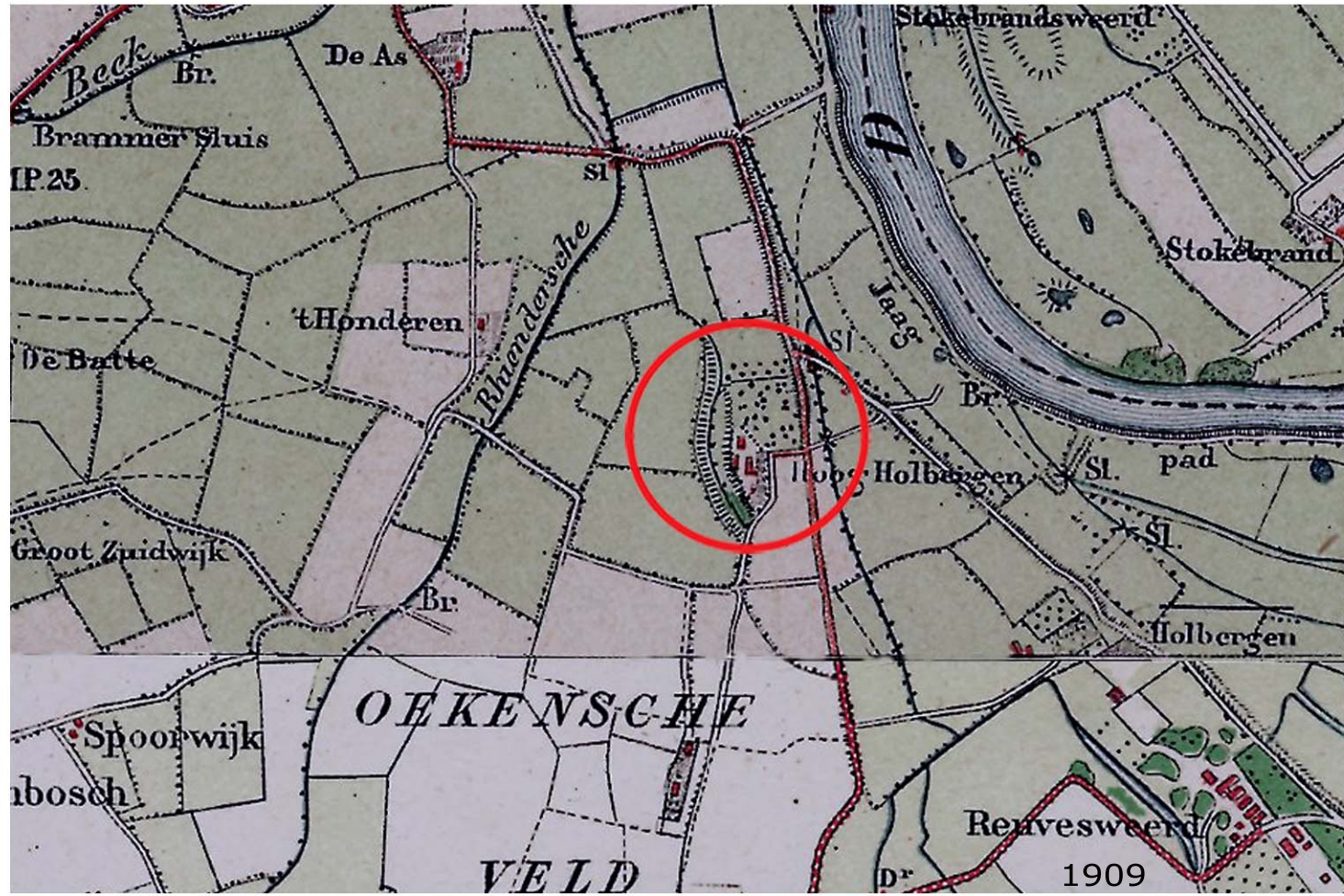
BUREN PROJECTGEBIED

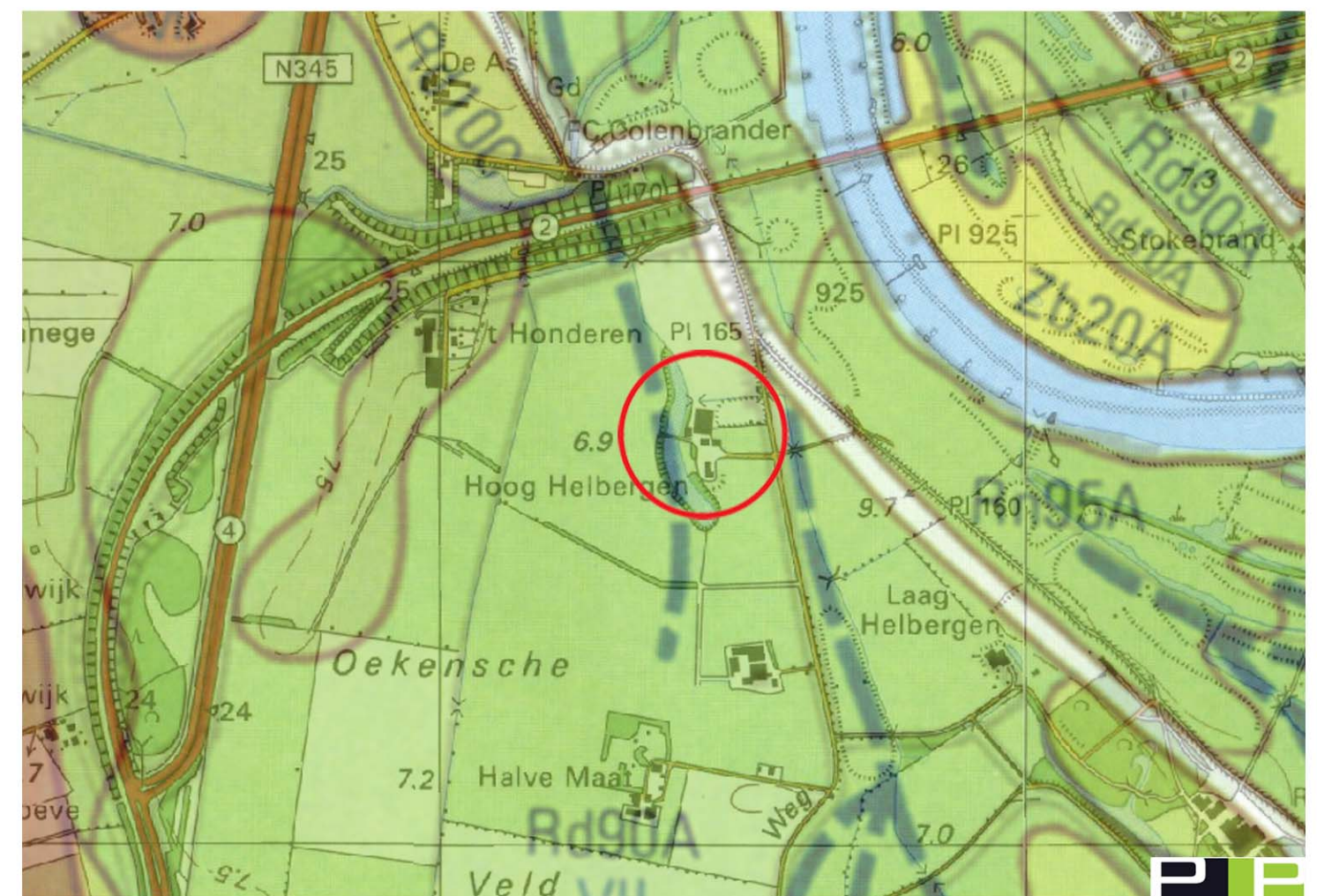
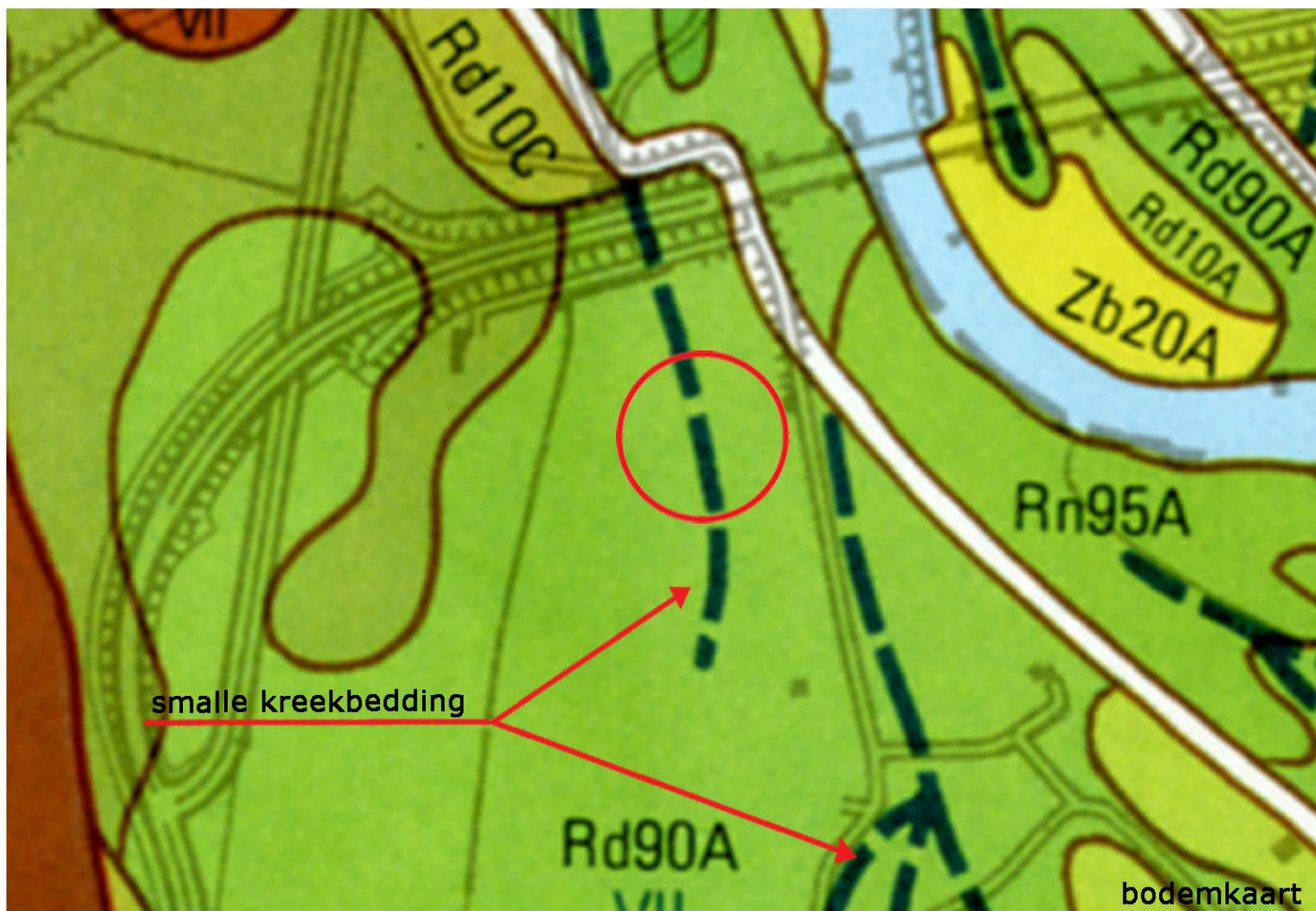


PLANGEBIED CORTENOEVER RUIJTE VOOR DE RIVIER

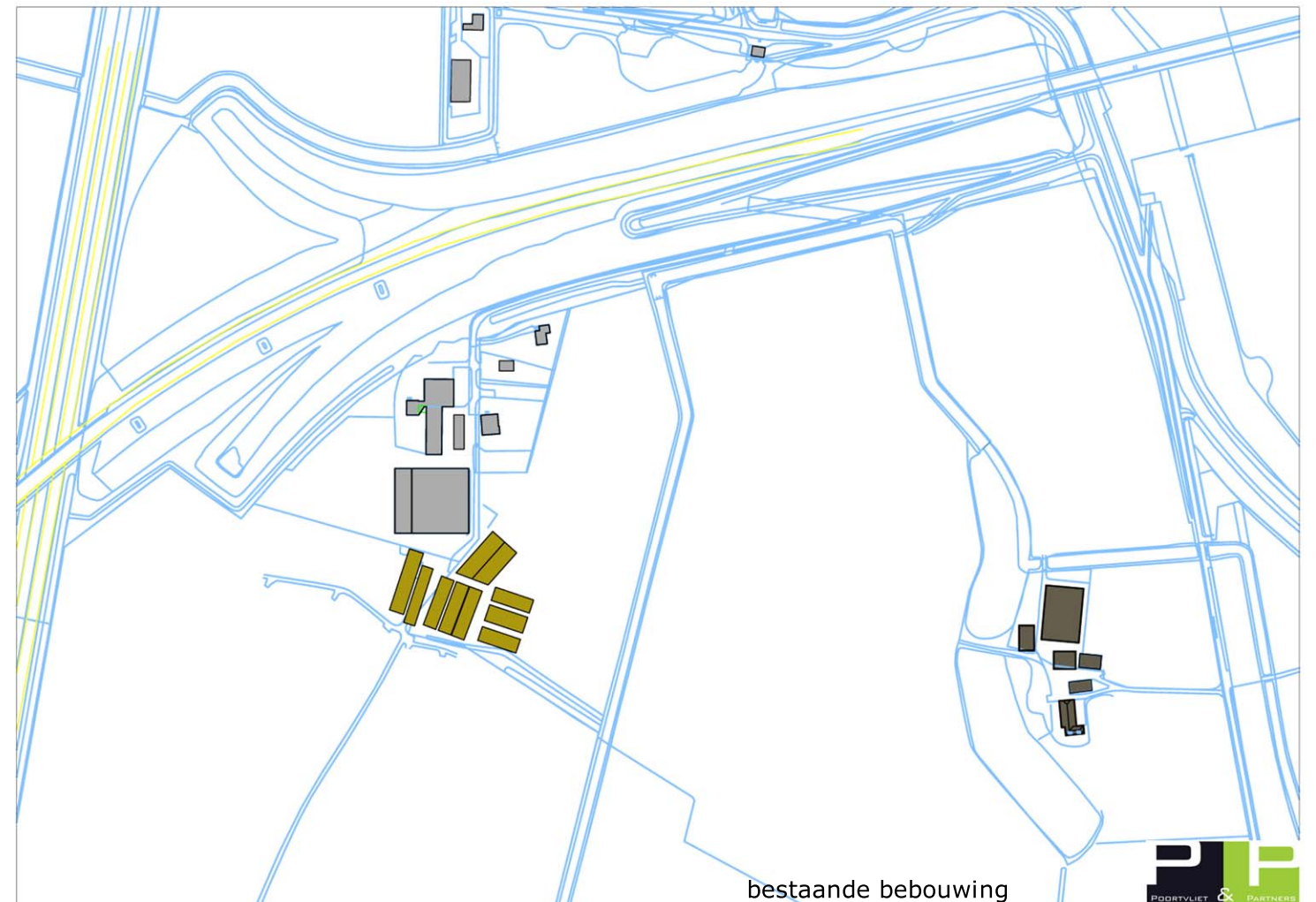
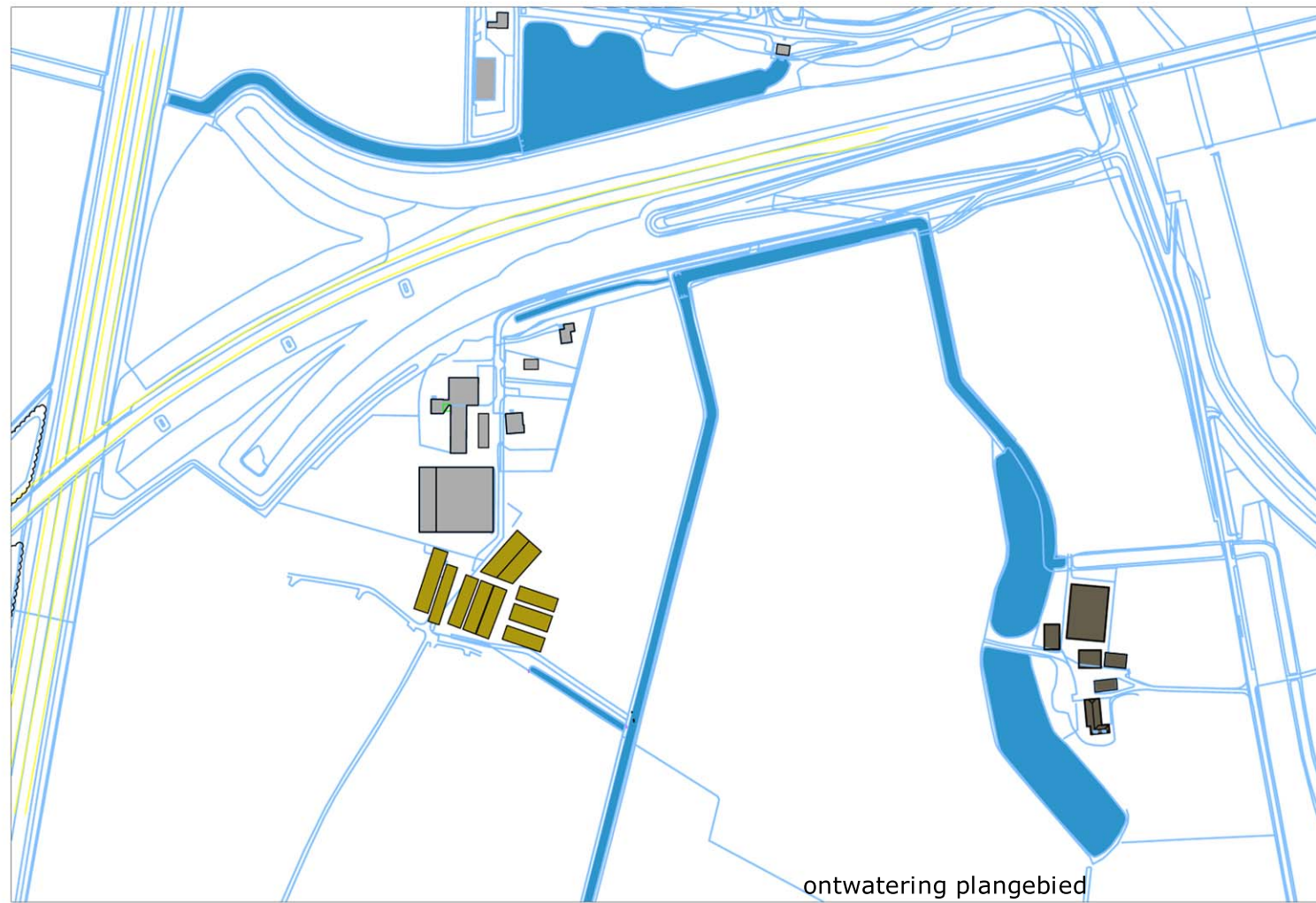
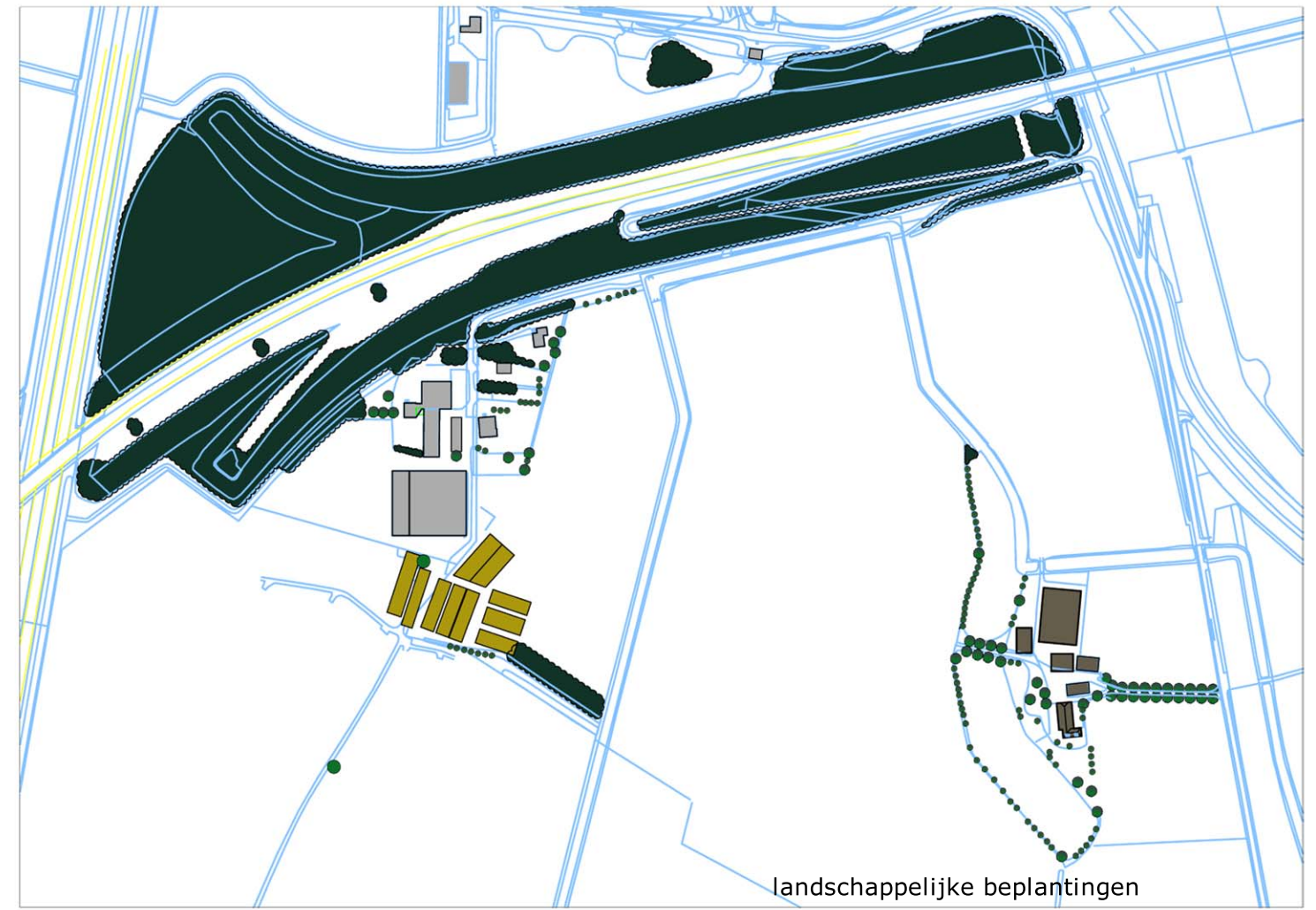
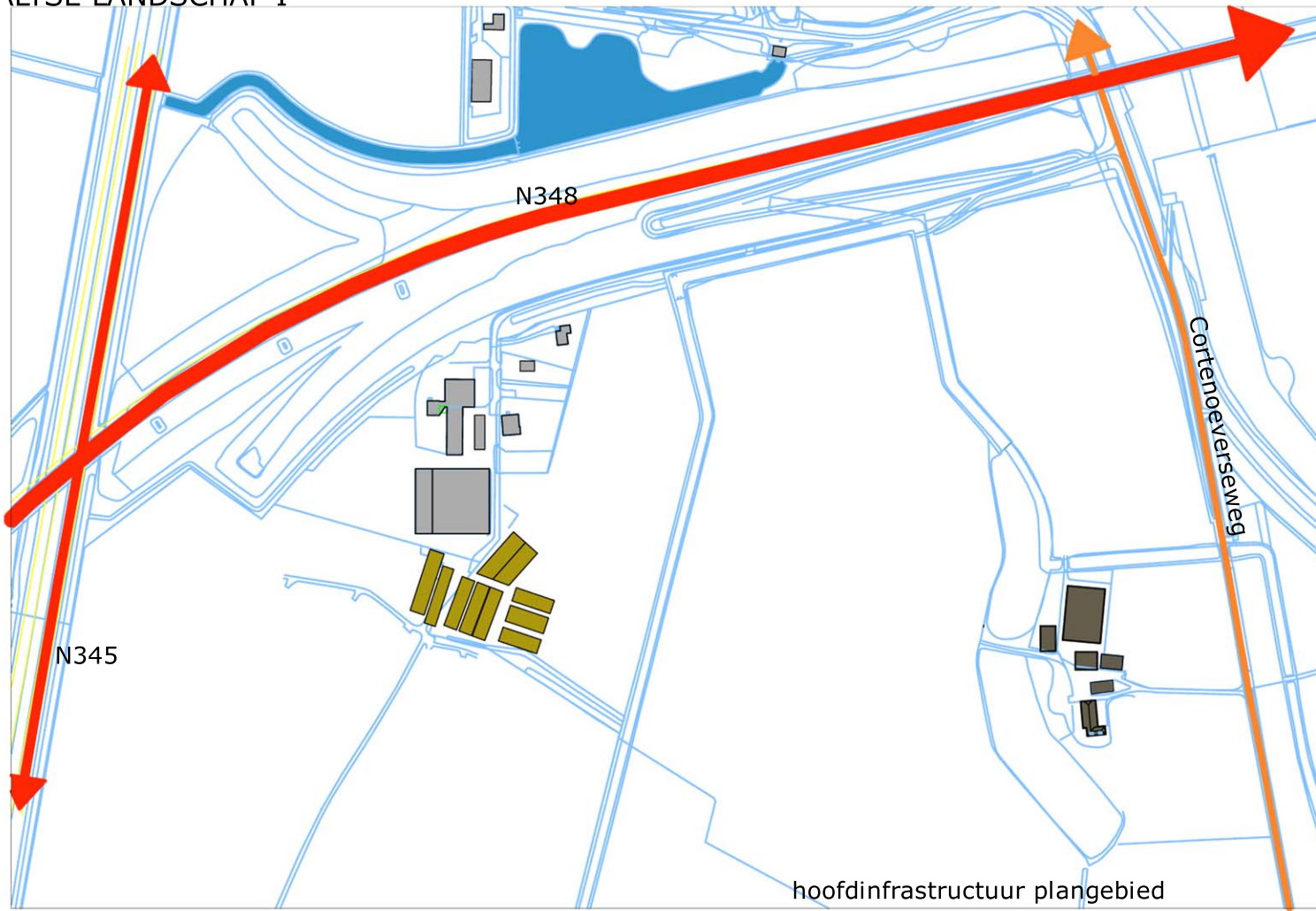


LANDSCHAPPELIJKE ONTWIKKELINGEN IN DE TIJD

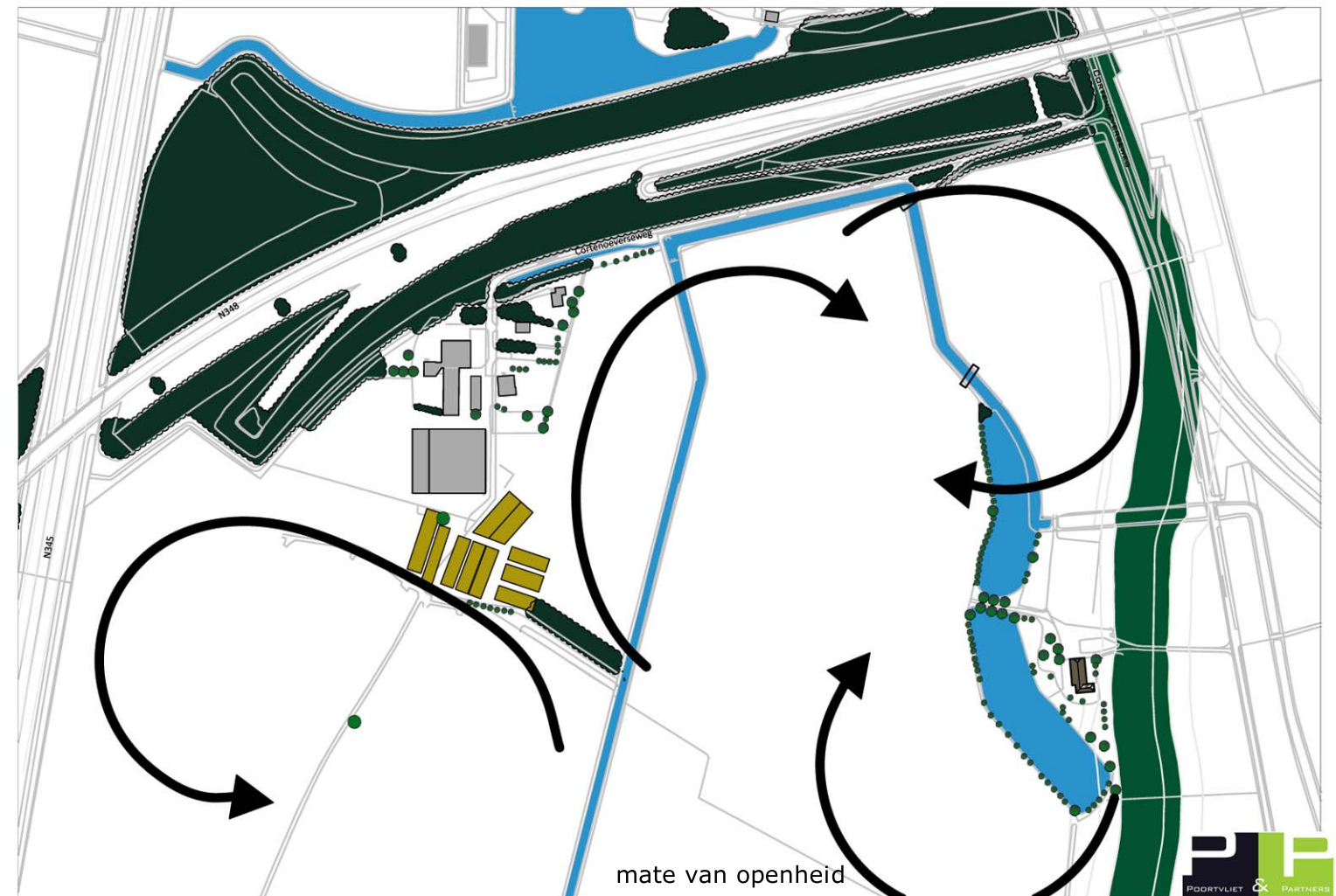
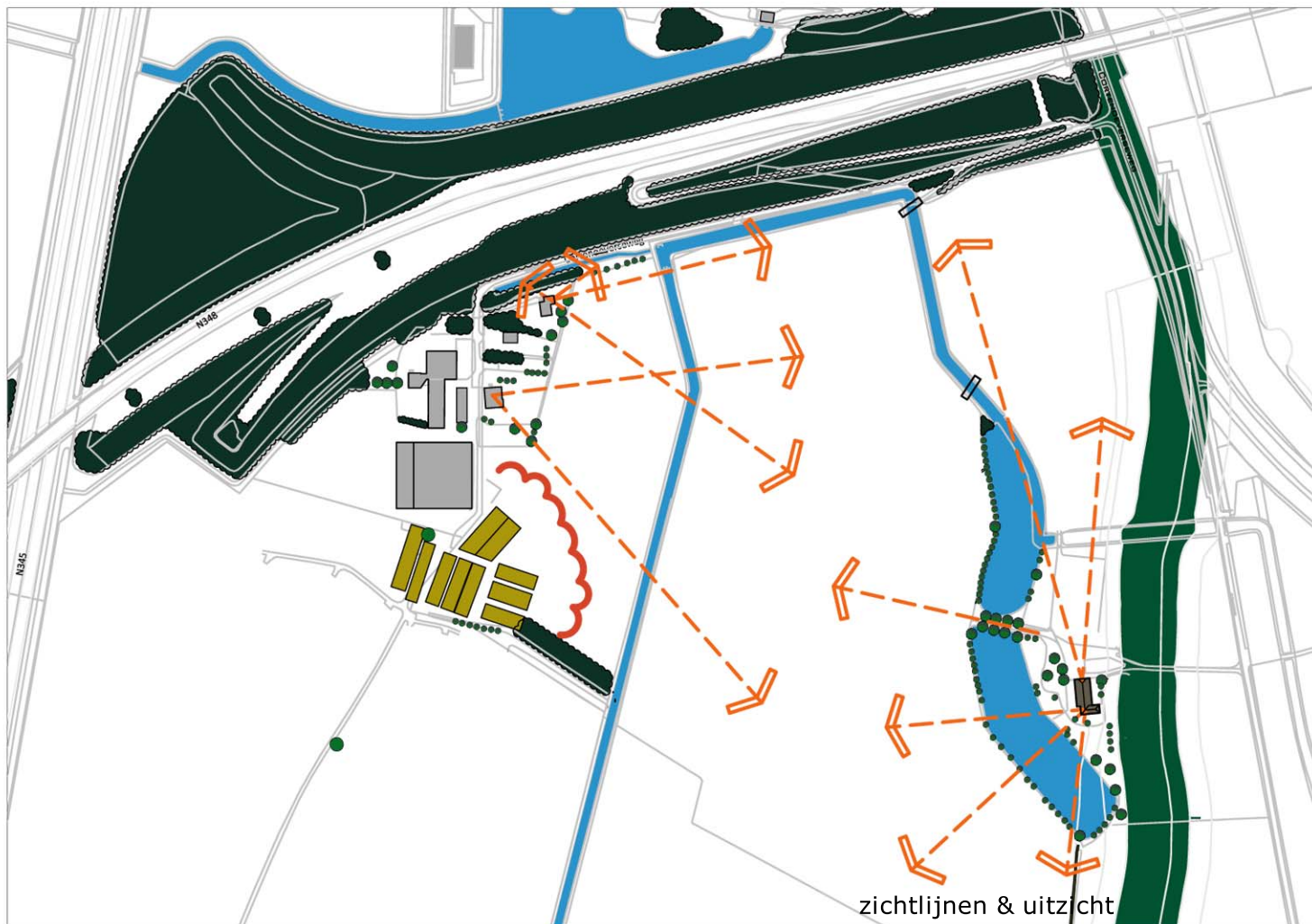
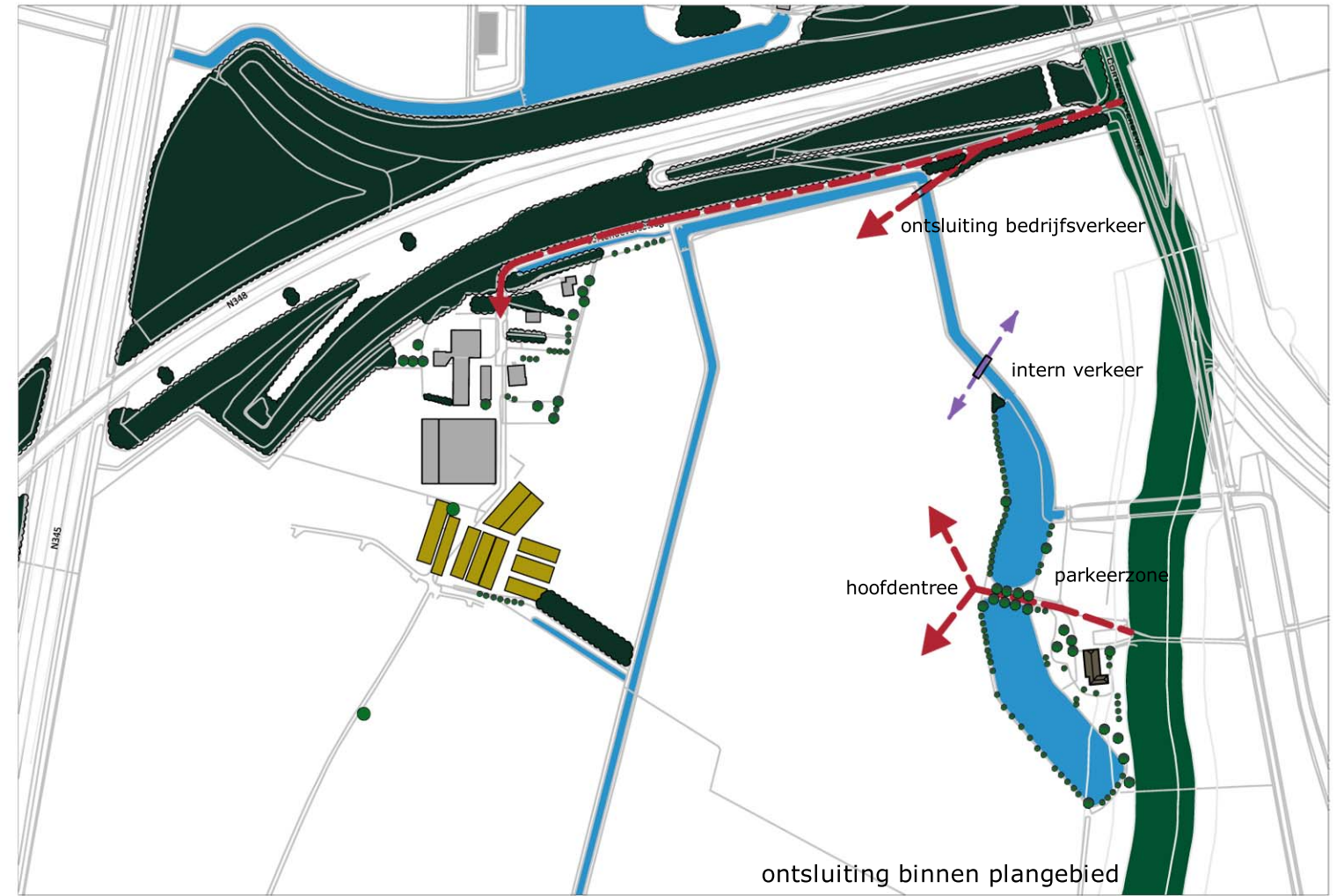
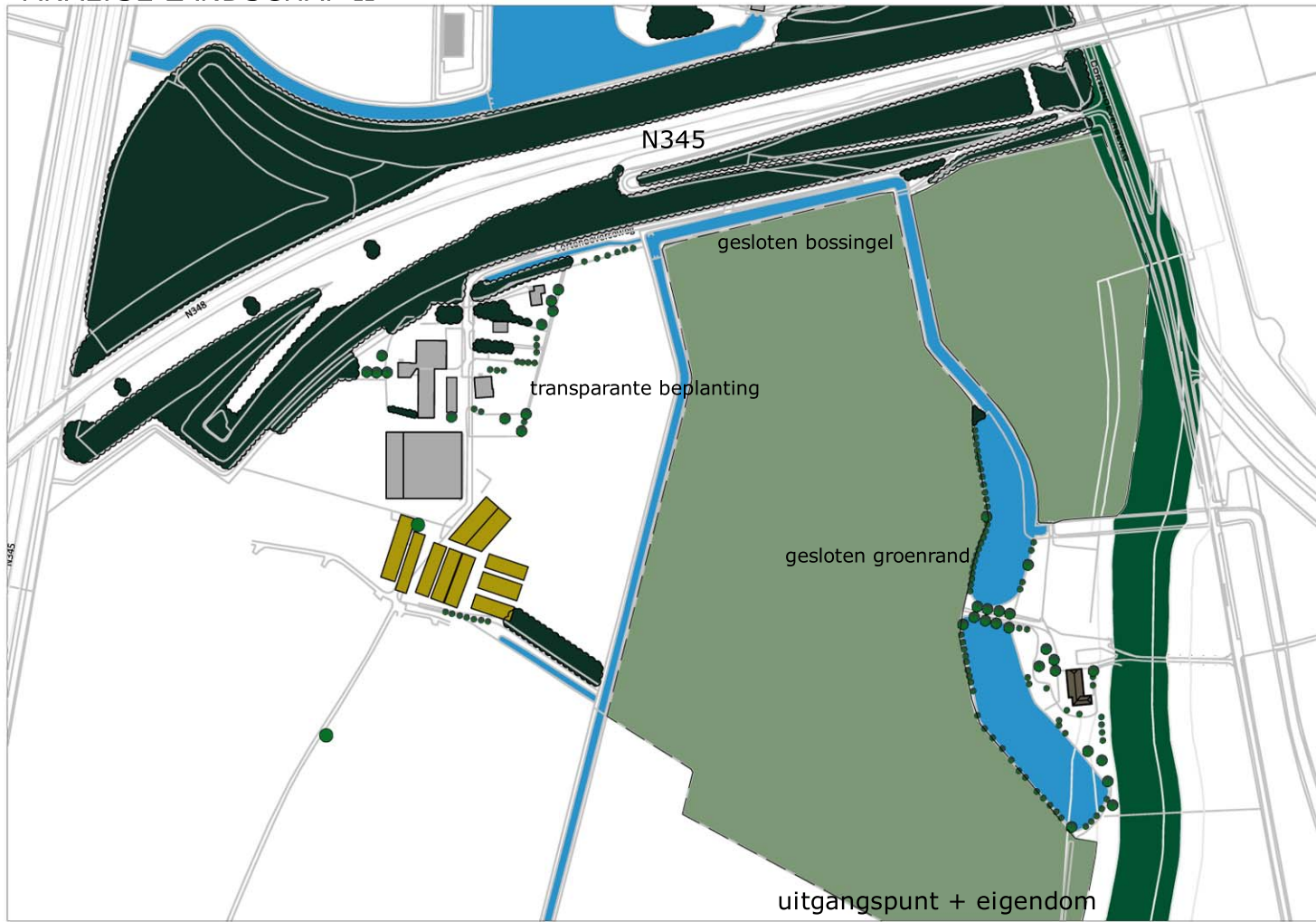




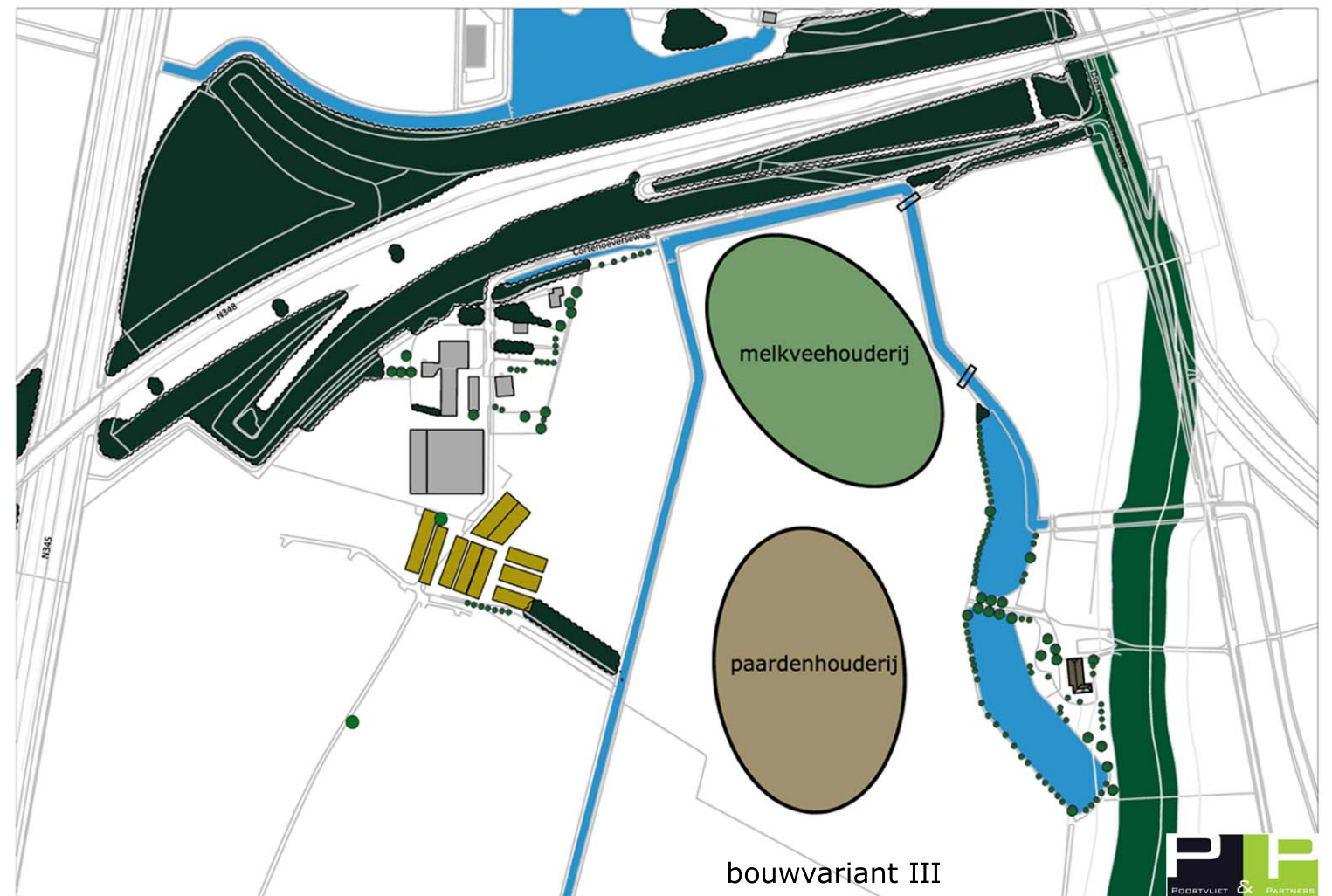
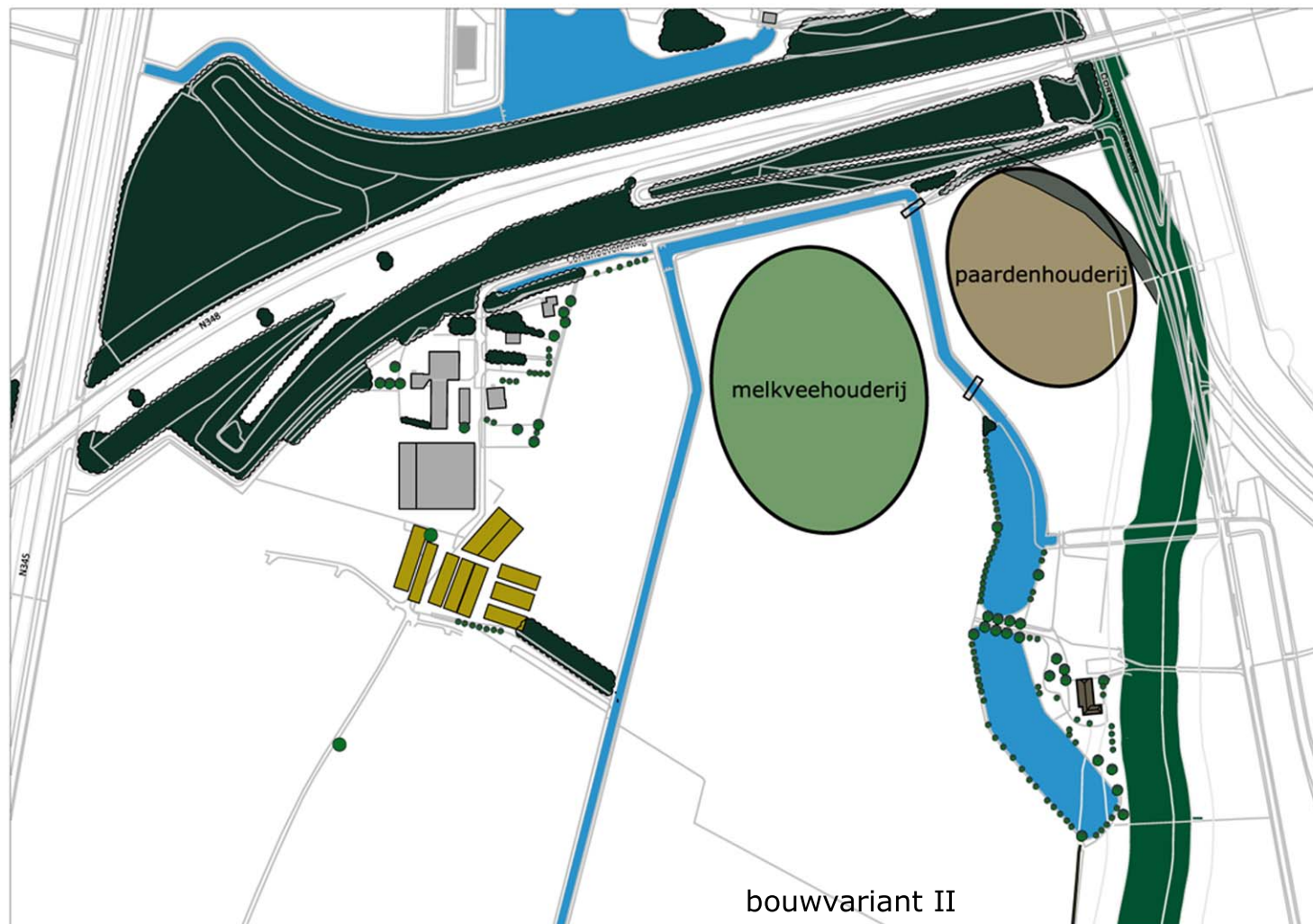
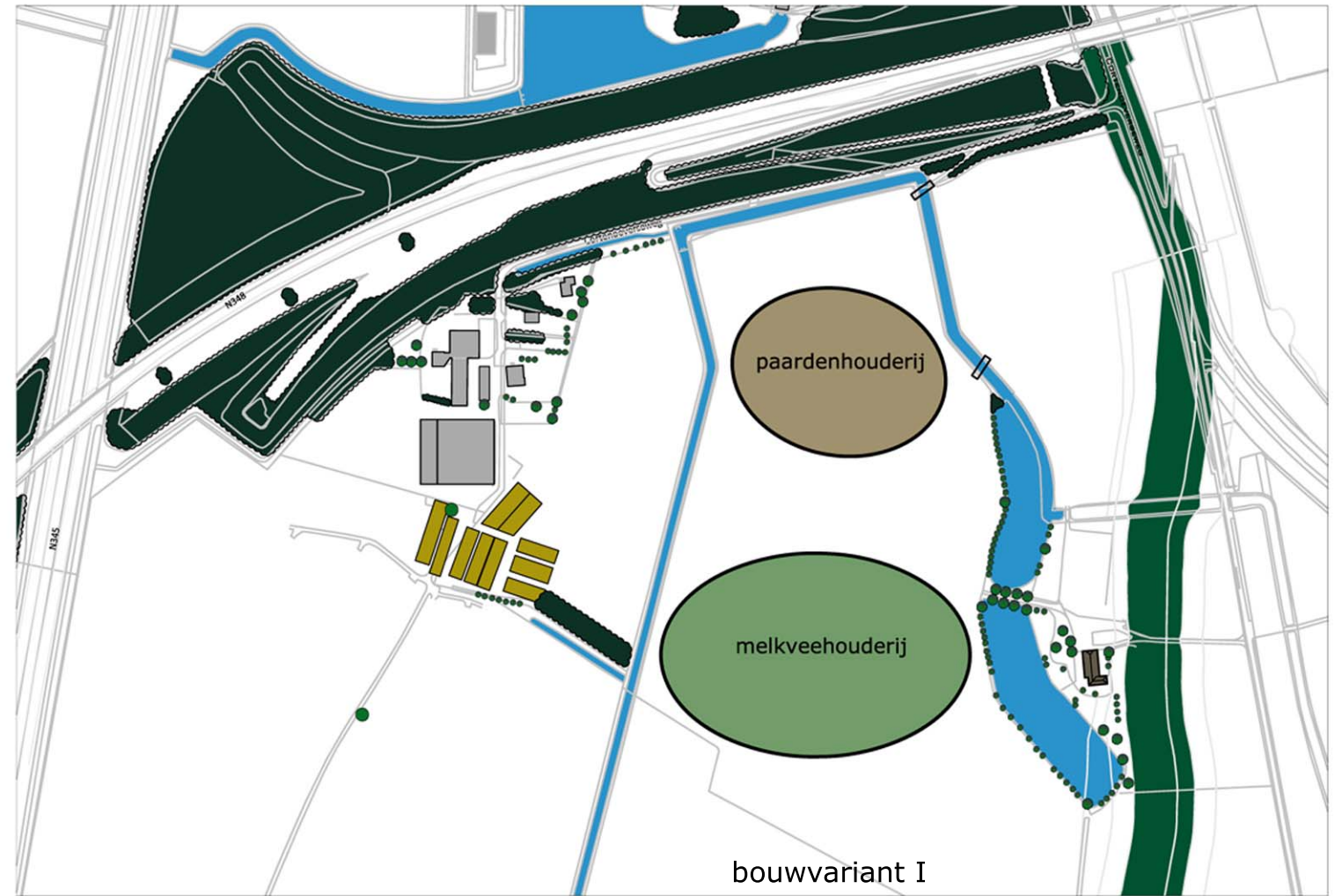
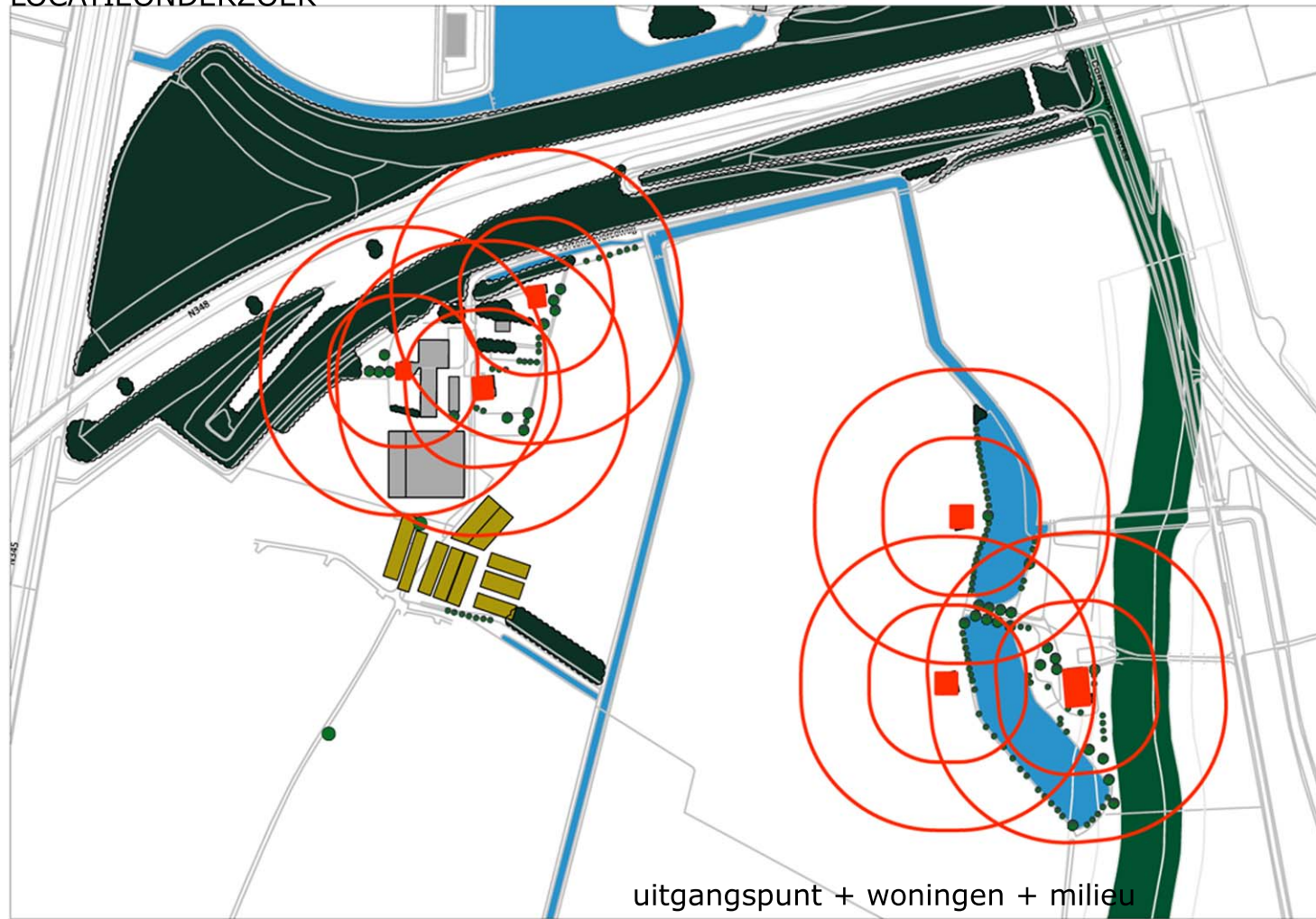
ANALYSE LANDSCHAP I



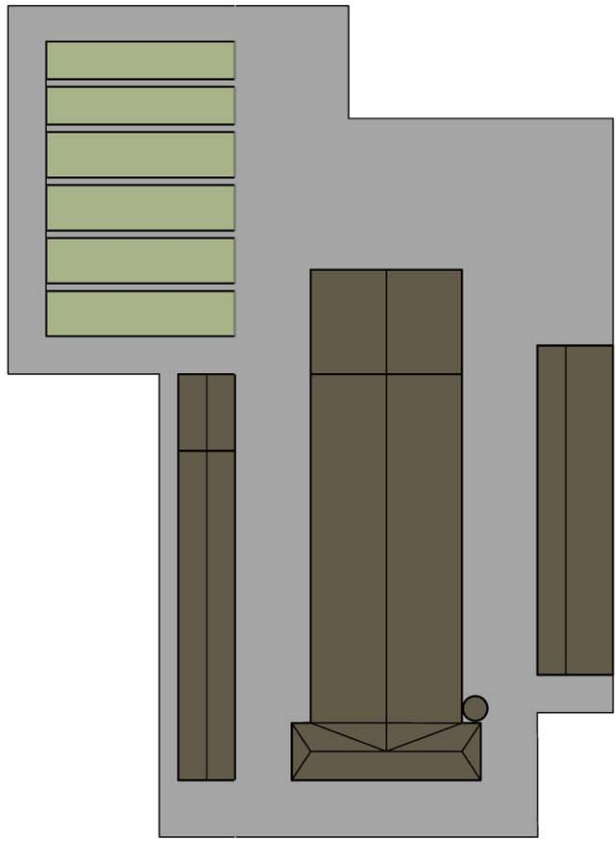
ANALYSE LANDSCHAP II



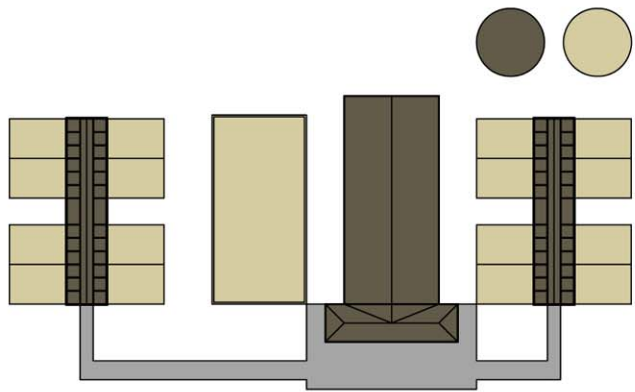
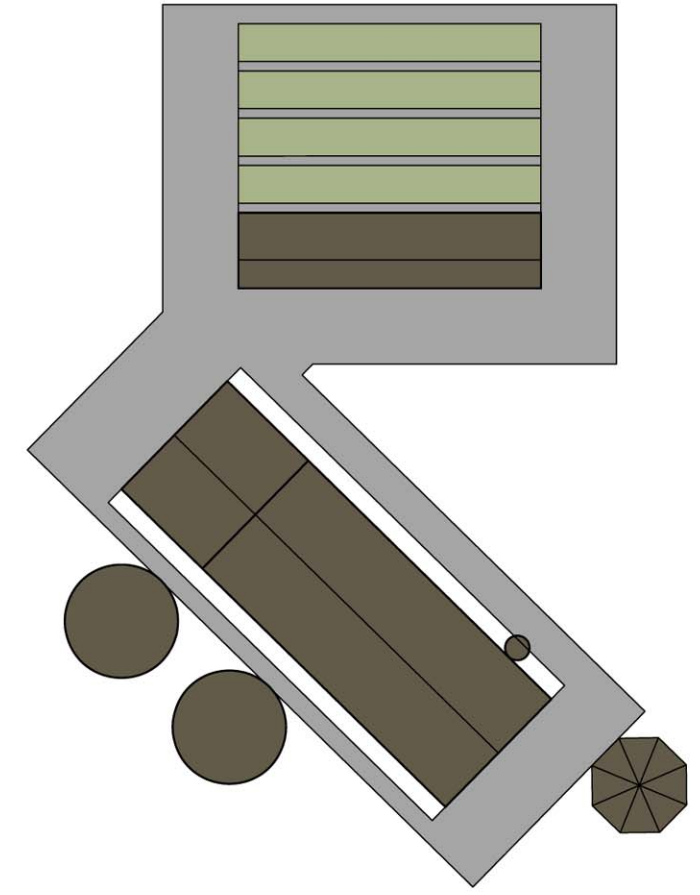
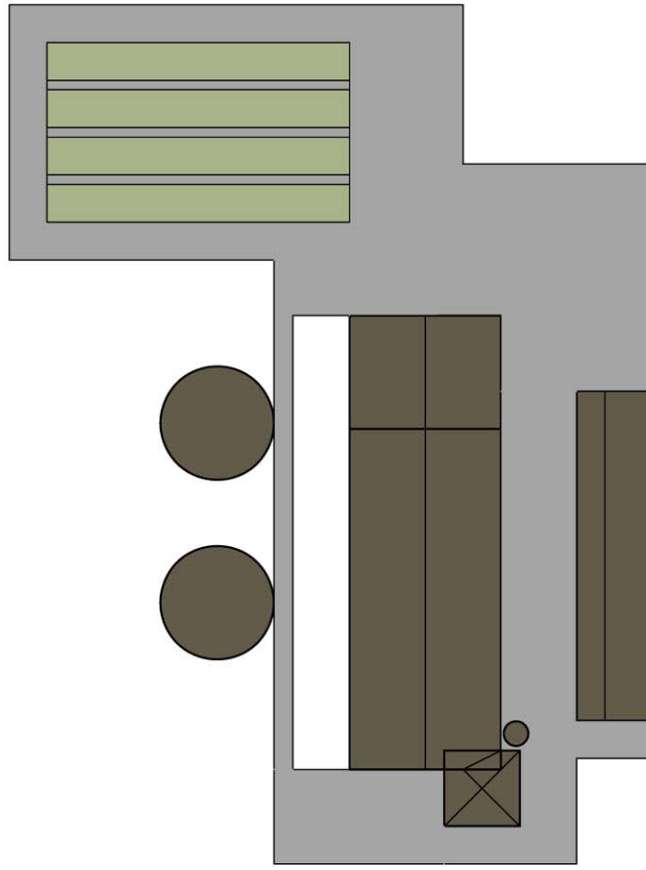




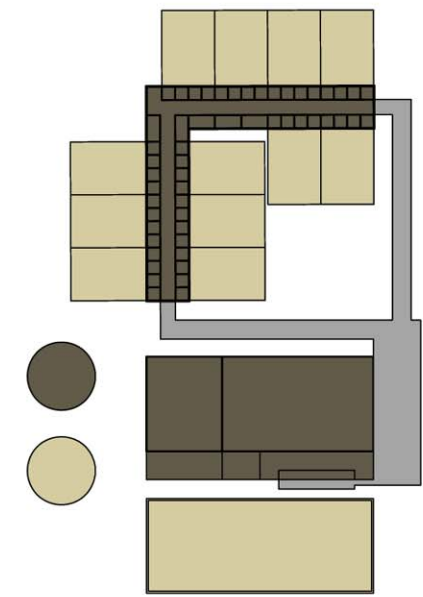
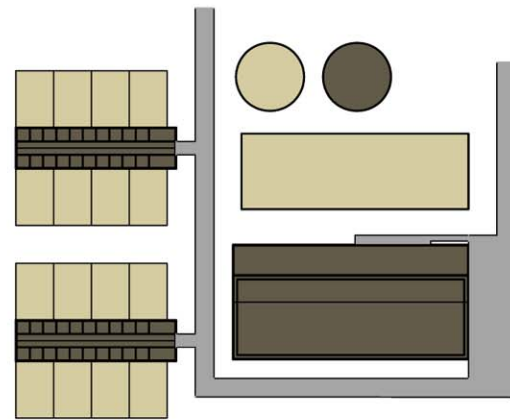
MODELLEN BEDRIJFSOPZET

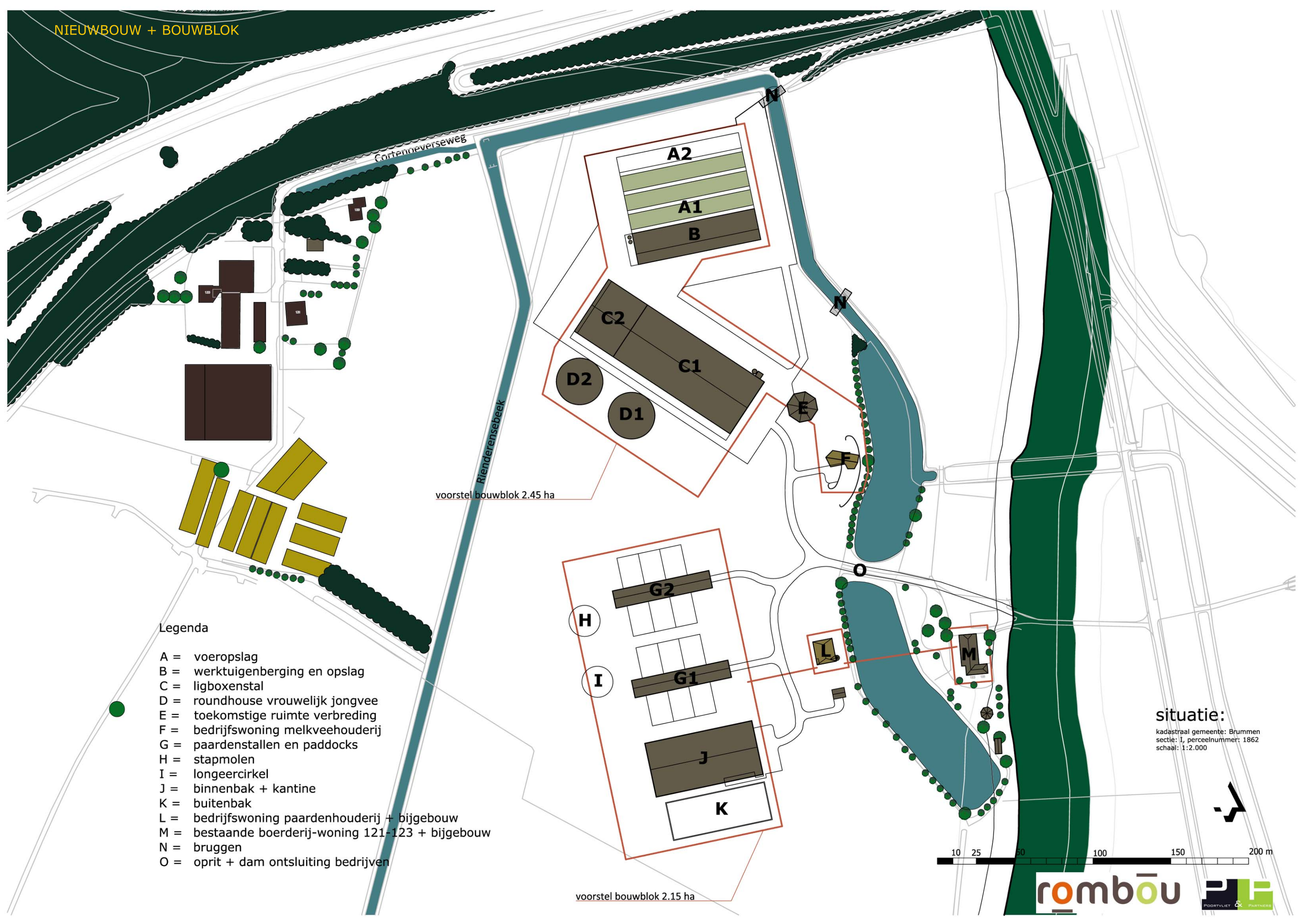


Melkveehouderij



Paardenhouderij





voorstel bouwblok 2.45 ha

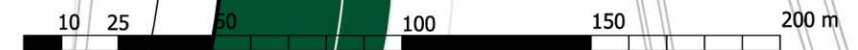
voorstel bouwblok 2.15 ha

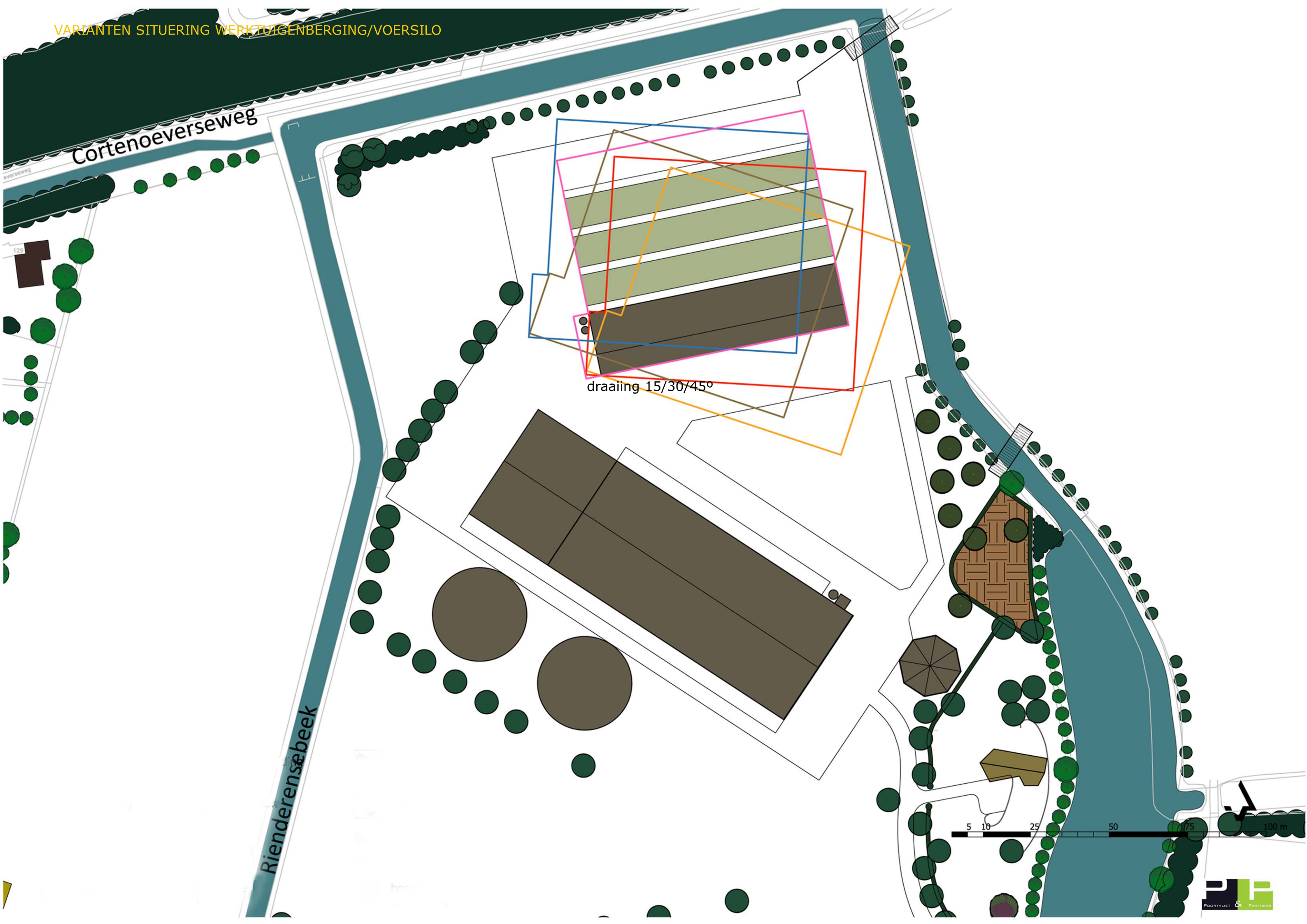
Legenda

- A = voeropslag
- B = werktuigenberging en opslag
- C = ligboxenstal
- D = roundhouse vrouwelijk jongvee
- E = toekomstige ruimte verbreding
- F = bedrijfswoning melkveehouderij
- G = paardenstallen en paddocks
- H = stapmolen
- I = langeercirkel
- J = binnenbak + kantine
- K = buitenbak
- L = bedrijfswoning paardenhouderij + bijgebouw
- M = bestaande boerderij-woning 121-123 + bijgebouw
- N = bruggen
- O = oprit + dam ontsluiting bedrijven

situatie:

kadastraal gemeente: Brummen
sectie: I, perceelnummer: 1862
schaal: 1:2.000





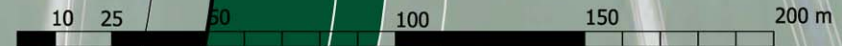


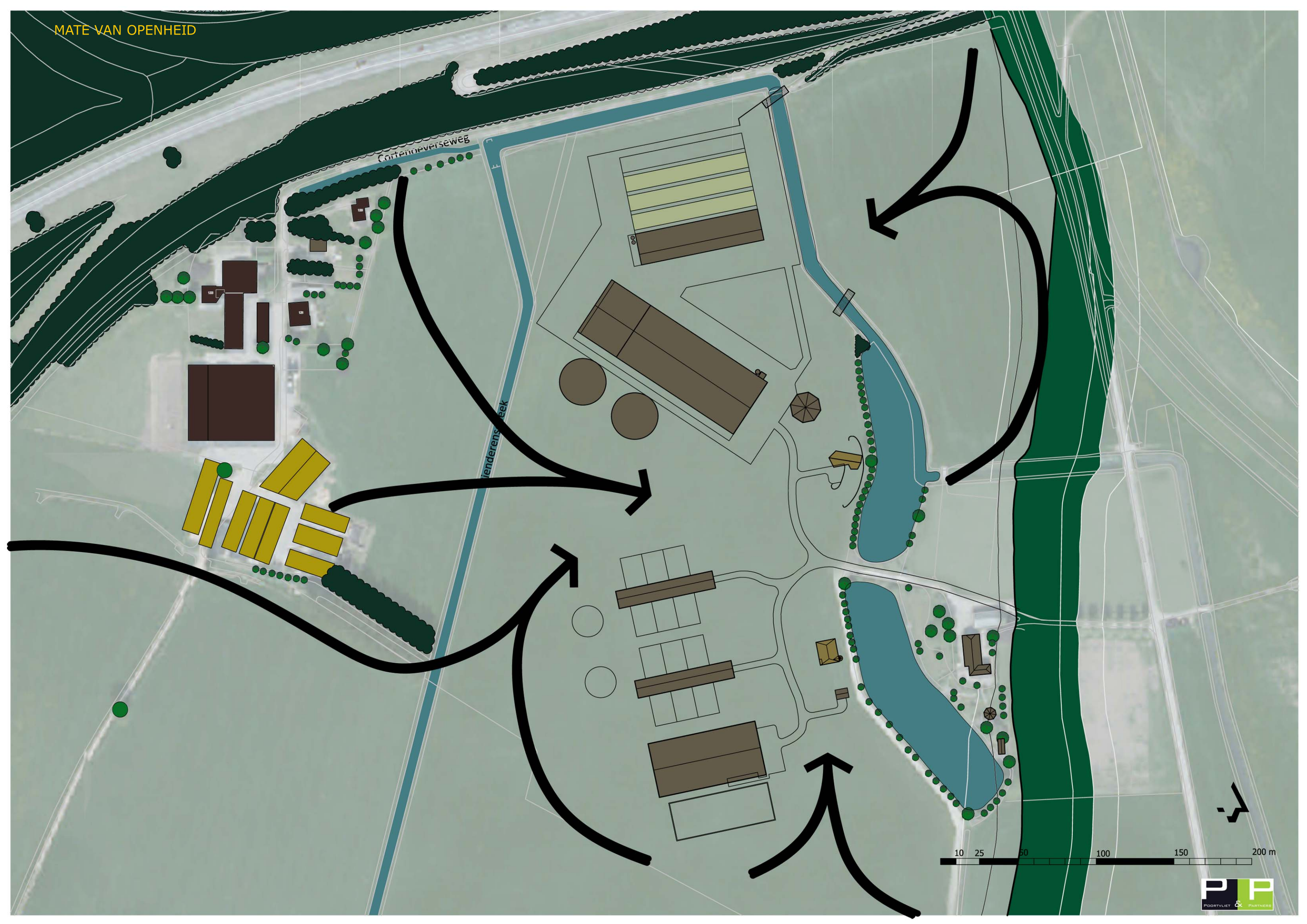
Cortenoerseweg

Rienderensebeek

situatie:

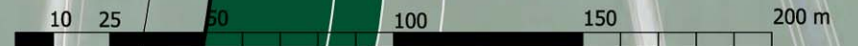
kadastraal gemeente: Brummen
sectie: I, perceelnummer: 1862
schaal: 1:2.000

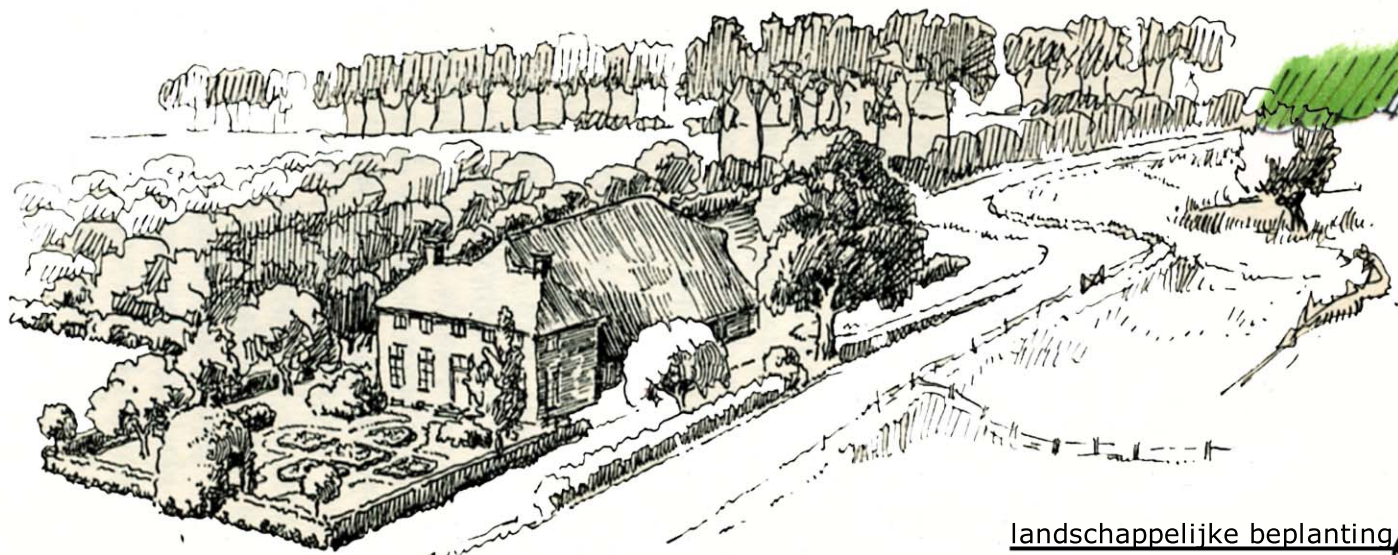




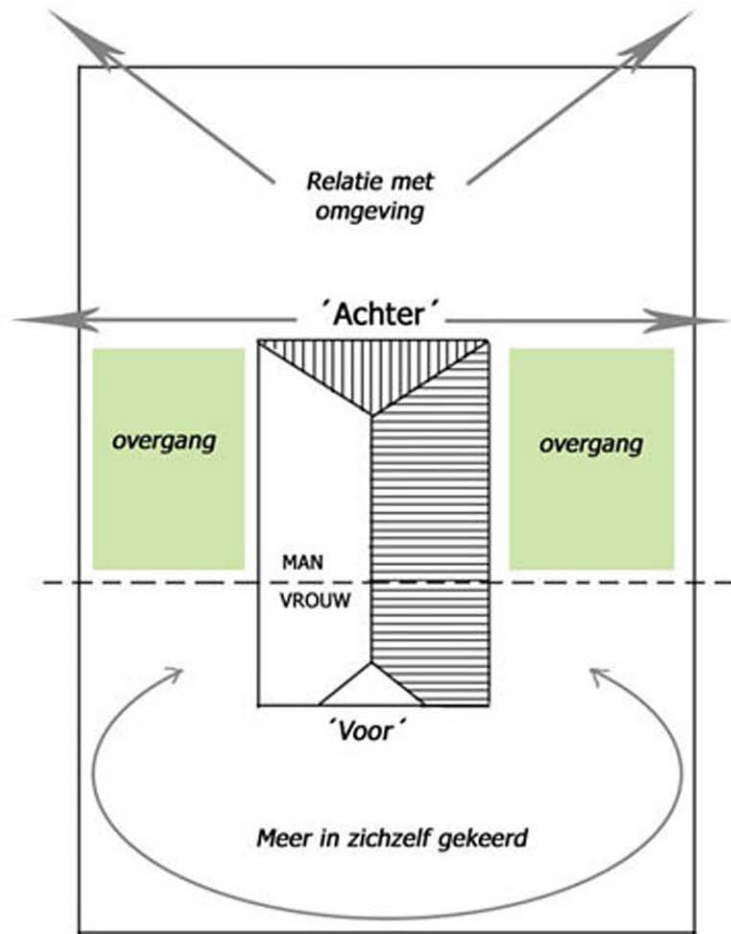
Cortenoeverseweg

Venderensbeek





Boerderijen langs de rivieren
bron: 'Nederlandsche boerenerven:
Bijhouwer 1943'



Historische opbouw boerenerf

landschappelijke beplanting





legenda

- | | | | | | |
|--|-------------------|--|---------------|--|---------------------|
| | bebouwing (best.) | | erfverharding | | houtsingel |
| | bebouwing (nieuw) | | hekwerk | | haag |
| | stallen (nieuw) | | brug | | bomen |
| | voersilo | | beek | | hoogstam fruitbomen |





legenda

- | | | |
|---|---|---|
|  bebouwing (best.) |  erfverharding |  houtsingel |
|  bebouwing (nieuw) |  hekwerk |  haag |
|  stallen (nieuw) |  brug |  bomen |
|  voersilo |  beek |  hoogstam fruitbomen |





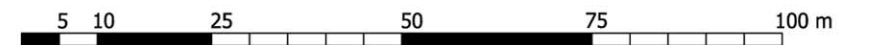
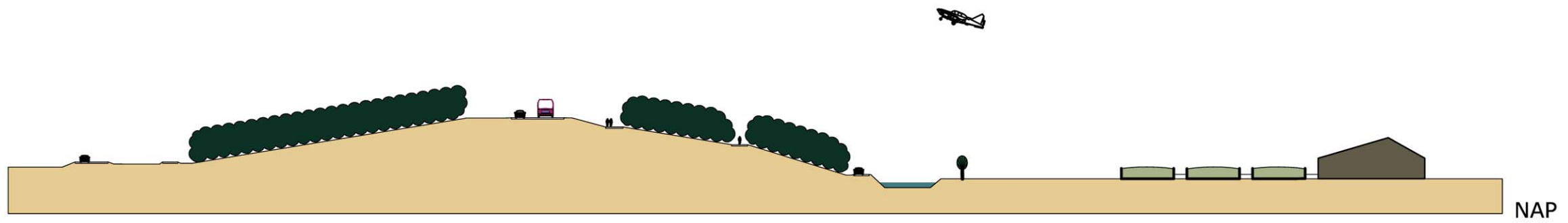
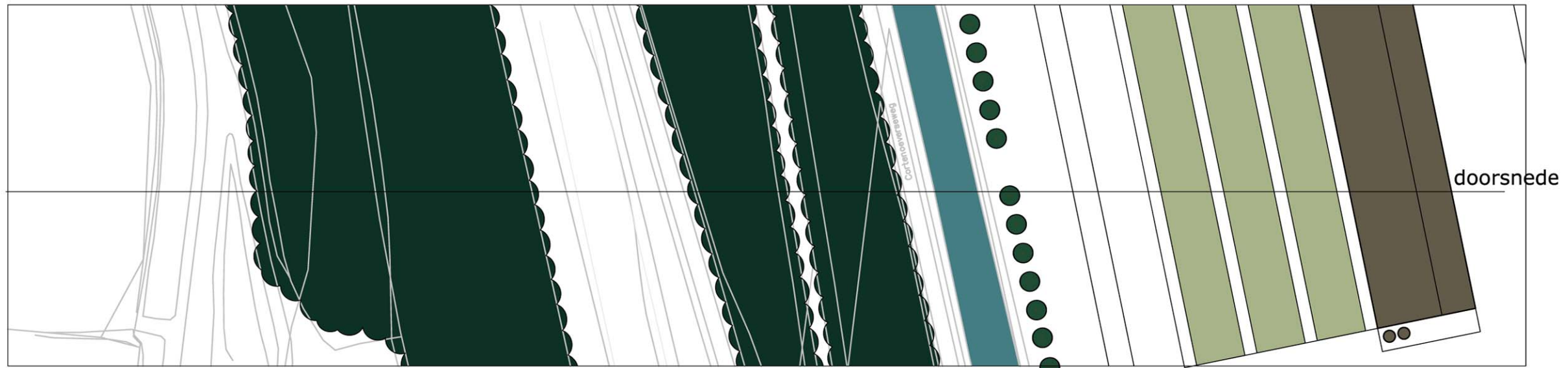
legenda

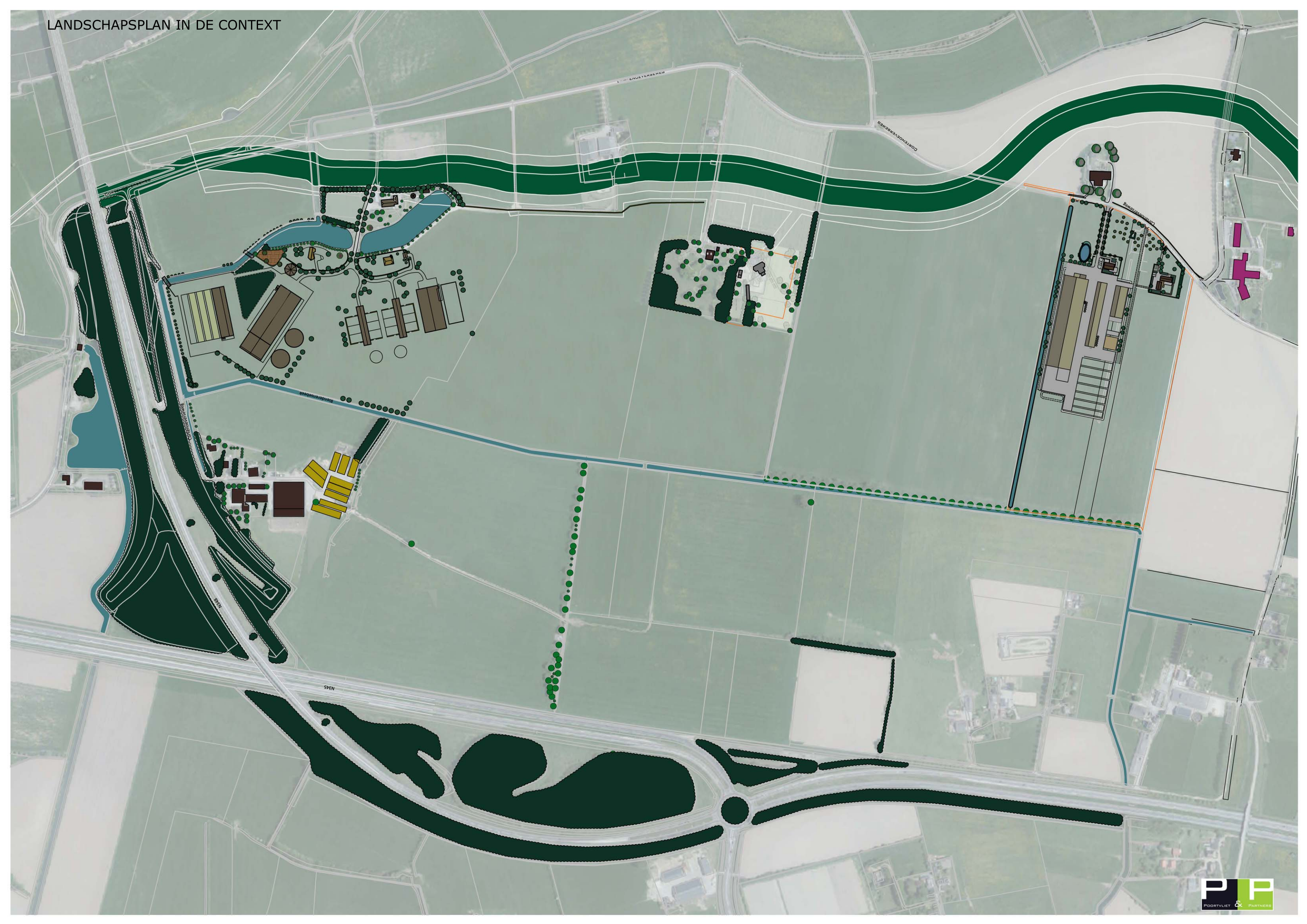
- | | | |
|---|---|---|
|  bebouwing (best.) |  erfverharding |  houtsingel |
|  bebouwing (nieuw) |  hekwerk |  haag |
|  stallen (nieuw) |  brug |  bomen |
|  voersilo |  beek |  hoogstam fruitbomen |



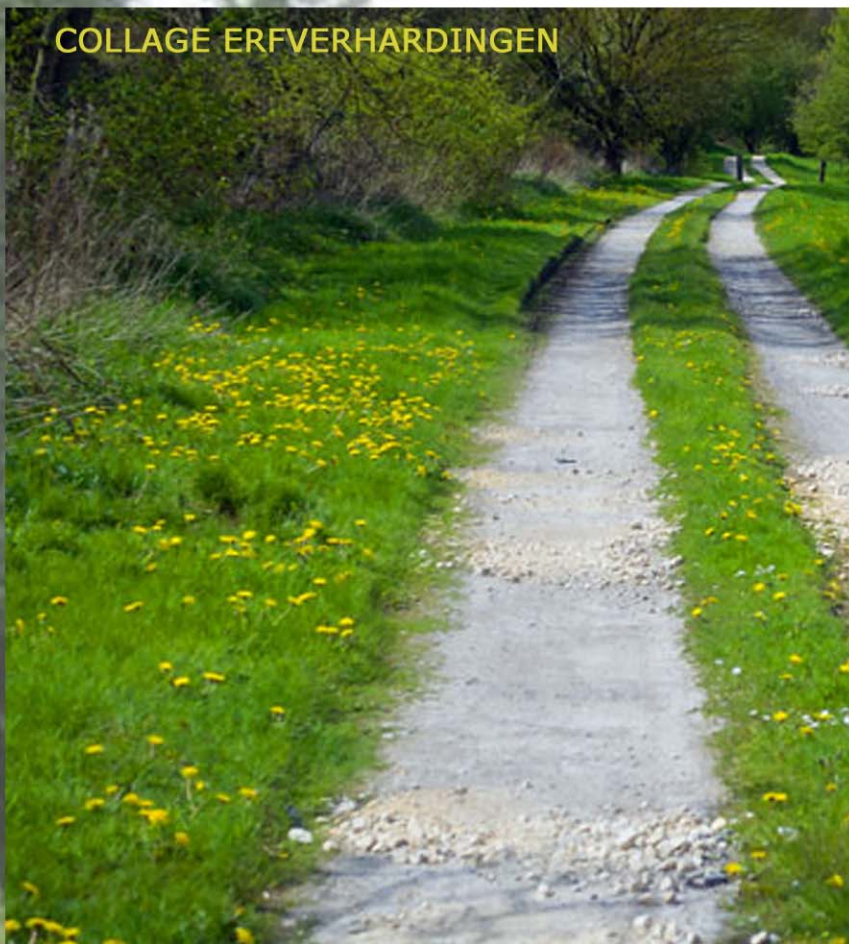


DOORSNEDE: TALUD IJSSELGOUW (N348) MELKVEEHOUDERIJ





COLLAGE ERFVERHARDINGEN





ROMBOU B.V.

Zwartewaterallee 14
Postbus 240
8000 AE Zwolle

088 888 6661
www.rombou.nl



Bureau Poortvliet&Partners
tuin- en landschaparchitecten bnf

Postbus 16
7360 AA Beekbergen

055 506 2961
www.poortvlietenpartners.nl



Bekhuis&Kleinjan architecten

Rijssensestraat 10
7642 CX Wierden

0546 571 004
www.bekhuis-kleinjan.nl



Orio architecten

Reactorweg 301
3542 AD Utrecht

085 877 0541
www.orioarchitecten.nl